



Study in
Serbia



YOUR GUIDE TO HIGHER
EDUCATION IN
SERBIA

DISCOVER
LEARN
EXPERIENCE

WELCOME!



4

DISCOVER

14

LEARN

42

EXPERIENCE



DISCOVER...

Welcome to Serbia! The Republic of Serbia is a European country located at the heart of the Balkan Peninsula, at the crossroads of Central and Southeast Europe. Situated at the central Balkan routes, Serbia has inherited considerable cultural wealth and become a unique mix of different influences and traditions. Choose Serbia as your study destination and discover its diverse and spectacular landscapes and experience the well-known hospitality of the Serbian people!

...Serbia

DISCOVER...

HIGH-QUALITY EDUCATION AT AFFORDABLE PRICES

Serbia provides a world-leading education in several study areas and our universities feature high on different academic ranking lists. High-quality education, combined with affordably priced tuition fees makes Serbia a top study destination in Europe. Discover more about the internationally recognised quality of Serbian higher education institutions on pages 10 and 11.

EARN A DEGREE THAT WILL ADVANCE YOUR FUTURE CAREER

There are around 180 study programmes at all levels (bachelor, master and PhD) entirely or partially taught in English. All study programmes are of high quality and accredited by the [National Entity for Accreditation and Quality Assurance in Higher Education in Serbia](#). Enrol in a university or college in Serbia and earn a degree that will advance your future career!

AFFORDABLE LIVING COSTS

Average monthly living expenses in Serbia range between 700 and 950 EUR (tuition fees not included), depending on the housing type and location. These amounts are lower than in other European countries and should cover food, accommodation, utilities, transportation and other expenses.



...why Serbia?

DISCOVER SERBIAN CULTURE AND HOSPITABLE PEOPLE

Perfectly safe and welcoming, Serbia is one of the emerging travel destinations in Europe! Serbs are known as friendly and hospitable people who will make your stay very enjoyable. Conveniently situated at the crossroads of Central and Southeast Europe, Serbia has connected the East and the West for centuries. Due to its rich cultural and historical heritage, it has become a diverse, multicultural community. Discover Serbia's uniqueness and experience its rich history and culture!

VIBRANT SOCIAL AND STUDENT LIFE

Something is always going on in Serbian cities, especially in the university centres. Belgrade will offer you an amazing student life full of fun activities such as music and film festivals, food fairs and spectacular nightlife! Other university cities, such as Novi Sad, Niš and Kragujevac, will welcome you with their charming atmosphere and friendly, warm people!



DISCOVER...



...higher education in Serbia - Key facts

Types of studies:	Academic and applied
Serbia has been a full member of the European Higher Education Area (EHEA):	Serbia joined the Bologna Process in 2003 and started implementing the European Credit Transfer and Accumulation System (ECTS). ECTS allows credits taken at one higher education institution to be counted towards a qualification studied for at another. Each study programme is defined through the number of ECTS.
Academic studies:	<ul style="list-style-type: none">• Bachelor studies range from 180 ECTS credits (3 years) to 240 ECTS credits (4 years);• Master studies range from 60 ECTS credits (1 year) to 120 ECTS credits (2 years);• PhD studies last for 3 years and carry 180 ECTS credits;• Specialist studies last for a year and carry 60 ECTS credits;• Integrated studies (Bachelor + Master) – last for 5 years and carry 300 ECTS credits (pharmacy/dentistry) or 6 years and carry 350 ECTS credits (medical sciences).
Accreditation:	Both an institution and a study programme must be accredited by the national accreditation body .
Academic year:	Starts in October, lasts for two semesters, 60 ECTS credits per annum, usually 5 exam periods.
Recognition of degrees:	To enrol in Bachelor/Integrated studies – contact the ENIC-NARIC Centre for recognition of your high-school diploma. To enrol in Master/PhD studies – contact the relevant university.
Tuition fees:	Usually range from 750 to 20000 EUR per year, depending on a programme.
Living costs:	Comparatively lower than in many other European countries: Accommodation - 150 - 1200 EUR Food - 150 - 500 EUR Public transportation - 15 - 25 EUR
Institutions:	Universities, faculties/academies of arts (members of universities), Academy of applied studies, colleges (members of academies).
Number of students:	249000 students
Number of foreign students:	10000+ students

DISCOVER...

INTERNATIONALLY RECOGNISED QUALITY OF HIGHER EDUCATION IN SERBIA

The quality of Serbian universities is widely recognized, as evidenced by the prestigious world ranking lists of higher education institutions. According to the latest ranking of universities around the world (2024) on the Shanghai ranking list (**shanghairanking.com**), the University of Belgrade is ranked between 401 and 500 among the best universities in the world.

Other global university rankings, such as **URAP** (University Ranking by Academic Performance), which rates the academic quality of 3000 best universities, feature the University of Belgrade as 318th, the University of Novi Sad as 888th, the University of Kragujevac as 1209th and the University of Niš as 1661st in the overall ranking.

The CWTS Leiden Ranking 2023 (**leidenranking.com**) also offers important insights into the scientific performance of over 1200 leading universities worldwide. They rated the University of Belgrade as the 46^h best university in Europe and the 201st world university. Being in the 209th place, the University of Novi Sad is another Serbian university highly ranked in Europe.

...internationally recognised quality

EXCELLENCE IN SUBJECT FIELDS

The University of Belgrade ranks between 101st and 150th in Mathematics, Food Science and Technology, Metallurgical Engineering, and Veterinary Sciences, according to the 2024 **subject rankings published by the Shanghai Ranking Consultancy**. In the field of Food Science and Technology, the University of Novi Sad is ranked between 151st and 200th. The University of Kragujevac and the University of Niš are ranked between 401st and 500th in Clinical Medicine and Mathematics, respectively.

URAP's subject rankings (2023-2024) put the University of Belgrade in the 96th place of the world's best universities in Food Engineering. The University of Novi Sad is in the top 188 in the same field. Moreover, the University of Belgrade ranked among 150 best universities in many other study areas, such as Pharmacology, Zoology and Dentistry.

DISCOVER...

...how much it costs to study in Serbia

TUITION FEES

Tuition fees in Serbia are paid annually and usually range from 750 EUR to 10000 EUR. Tuition fees cover 60 ECTS credits per annum and include access to university/college facilities such as computer labs, libraries and other study services. Books and study materials are usually not included. However, their price rarely exceeds 100–250 EUR per year.

COST OF ACCOMMODATION

Student dormitories: Public dormitories in Serbia are available for the holders of the Serbian government scholarship and the international students coming on an exchange within the CEEPUS programme.

Housing: The cost of privately rented accommodation depends on the location, size, position and state of the rented property. Sharing a flat with other students in a small town can cost 150 EUR or more per person, utilities excluded. If you want to rent a whole flat in a central location in Belgrade for yourself, that can cost up to 1200 EUR per month. However, if you want to rent a whole flat in a non-central location in Belgrade for yourself, that can cost up to 500 EUR per month.

FOOD EXPENSES

Student canteens in Serbia offer meals at discounted prices – around 1 - 2,6 EUR per meal. These canteens are open to all students who own a student card. Groceries are cheaper in supermarkets than in smaller local shops and fruits and vegetables are the most affordable (and of better quality) when purchased in the farmers' markets.

 1kg 1-1.5 EUR	 10pcs 1.5 - 2.5 EUR
 1kg 1 EUR	 1l 1-1.5 EUR
 loaf 0,5 kg 0.4-1.5 EUR	 soft drink 2l 2-2.5 EUR




TRAVEL COSTS

A monthly public transport pass is free in Belgrade, while in other Serbian cities it costs around 10 EUR or less with a student discount. The pass allows unlimited travel on all forms of public transport.

COST OF LEISURE ACTIVITIES

- Coffee or a soft drink in a café ~ 1.5 - 4 EUR;
- A cinema ticket ~ 4-8 EUR;
- A night out ~ 20-50 EUR;
- A one-day excursion (to a historical or natural landmark, a shopping tour, etc.) ~ 30 EUR.

ESTIMATED COSTS PER MONTH (IN EUR)

	Big city (more than 100000 inhabitants)		The capital (Belgrade)	
	min	max	min	max
 TUITION FEE	100	500	100	600
 ACCOMMODATION (incl. utilities)	Shared flat 200	Private flat 500	Shared flat 250	Private flat 900
 FOOD, TRAVEL AND LIVING EXPENSES	450		500	
TOTAL (incl. tuition)	750	1450	850	2000

LEARN...

... *Where to study*

Higher education institutions are located all over the country, but the biggest university centres with the largest student population are Belgrade (the capital), Novi Sad, Niš and Kragujevac.

... *In which language to study*

The main language of instruction is Serbian, however, there are also study programmes entirely or partially taught in English and other foreign languages.

Degree or exchange studies in English: You can find the list of English-taught study programmes in this publication or by visiting studyinserbia.rs.

Study in Serbian: You can enroll in a Serbian-taught degree programme if you speak Serbian. If you would like to learn it, visit studyinserbia.rs for more information on how to do that.

... *When to apply*

Although application deadlines vary, most are organised in June (for undergraduate studies) and October (for Master and PhD studies). We understand that sometimes it can be challenging to navigate your application process. To make sure not to miss any deadlines, you can follow our 12-step guide to studying in Serbia on pages 36–39.

... *What to study*

With around 180 full-degree study programmes at all levels entirely or partially taught in English and student exchange programmes, Serbia offers many opportunities for prospective international candidates.

... *How much it costs*

The cost of studying and living in Serbia is considerably lower than in other European countries:

1. Tuition fees range from less than 750 EUR to up to 10000, and average living costs (accommodation, food and other expenses) are around 500–850 EUR;
2. Fun and leisure activities are also very affordable.

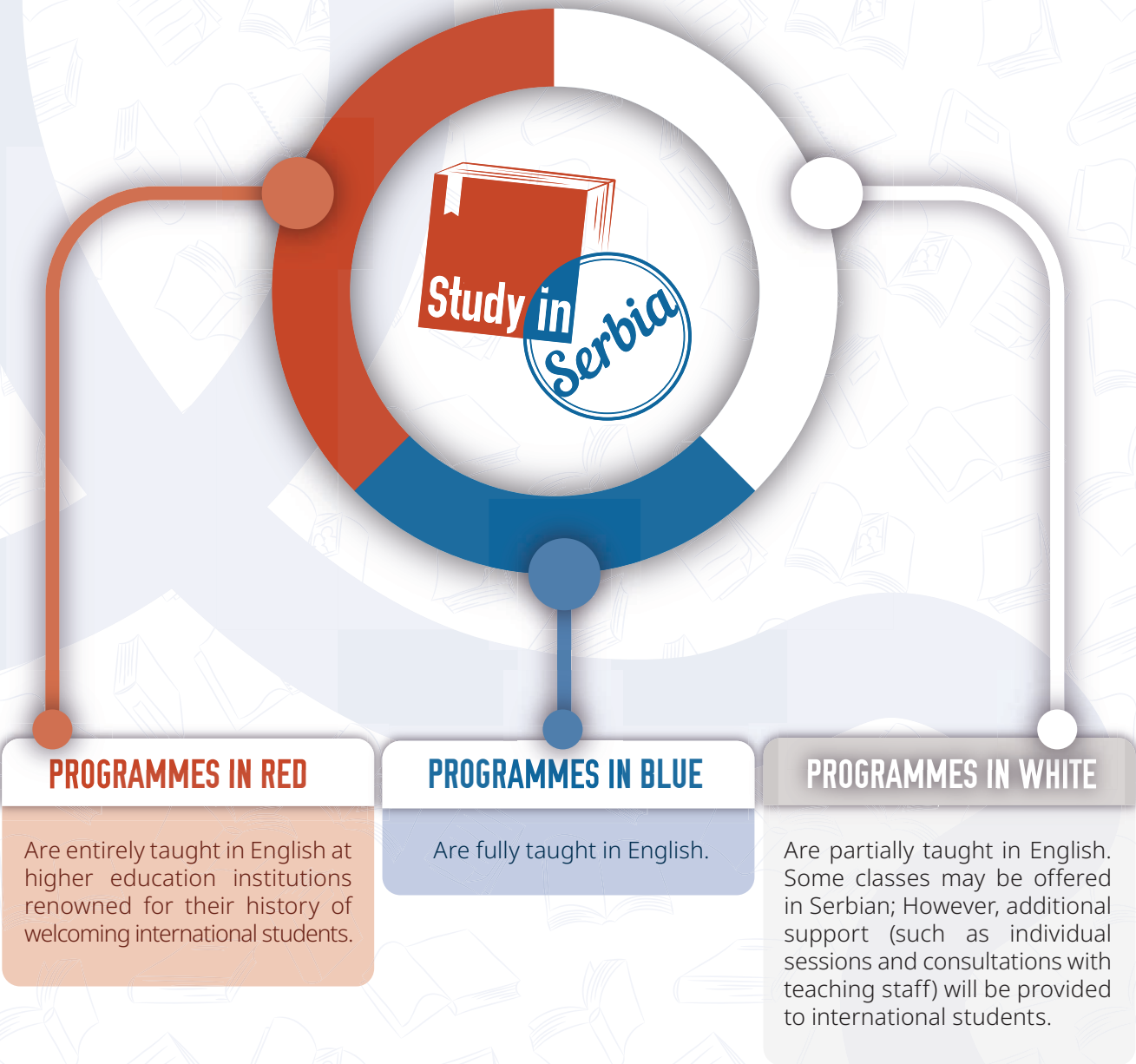
... *How to start*

Just turn the page and start exploring!

LEARN ABOUT...

The following pages feature a list of study programmes that are entirely or partially taught in English and accredited by the National Entity for Accreditation and Quality Assurance in Higher Education in Serbia. Please be advised to double-check the information provided on the list with a relevant higher education institution. The contact details for each program are listed below.

The programmes are presented by study fields and divided into the following three categories:



...programmes and institutions

UNDERGRADUATE DEGREES - BACHELOR AND INTEGRATED PROGRAMMES (1 st Degree Programmes)			
Duration of the programme (total no. of years)	STUDY PROGRAMME	Tuition fee per academic year ² (in EUR)	INSTITUTION (University/Faculty)
MEDICAL SCIENCES			
6	MEDICINE	8000	University of Belgrade Faculty of Medicine studiesinenglish.med.bg.ac.rs/ biljana.buljugic@med.bg.ac.rs bojana.stankovic@med.bg.ac.rs milena.mihailovic@med.bg.ac.rs
6	INTEGRATED STUDIES DENTAL MEDICINE	5000	University of Belgrade Faculty of Dentistry https://www.stomf.bg.ac.rs/nastava/integrisane-studije-stomatologije/plan-i-program-studija/ jasmina.tekic@stomf.bg.ac.rs
6	MEDICINE	6000	University of Niš Faculty of Medicine medfak.ni.ac.rs/index.php/en/studies-in-english-en studmednis.com medni.eng@gmail.com
6	DENTAL MEDICINE	7200	
5	PHARMACY	3500	University of Belgrade Faculty of Pharmacy pharmacy.bg.ac.rs/en milica.benedik@pharmacy.bg.ac.rs
5	PHARMACY INTEGRATED ACADEMIC STUDIES	3000	University of Kragujevac Faculty of Medical Sciences medf.kg.ac.rs/en/phias.php phias@medf.kg.ac.rs iasme@fmn.kg.ac.rs
6	MEDICINE INTEGRATED ACADEMIC STUDIES	6000	University of Kragujevac Faculty of Medical Sciences medf.kg.ac.rs/iasm/ iasme@fmn.kg.ac.rs
5	PHARMACY	5000	Business Academy University Faculty of Pharmacy faculty-pharmacy.com/en/pharmacy/ office@ffns.ac.rs
5	PHARMACY - MEDICAL BIOCHEMISTRY	5000	

¹ Undergraduate and postgraduate academic studies are integrated into one cycle of studies. Integrated study programmes last for 5 or 6 years and comprise 300 or 360 ECTS credits.

² Tuition fees may differ from the ones presented in the catalogue. Prospective candidates are advised to double-check the fees with a relevant higher education institution. Contact information for each study programme is listed in the table.

Duration of the programme (total no. of years)	STUDY PROGRAMME	Tuition fee per academic year ² (in EUR)	INSTITUTION (University/Faculty)
3	NURSING	4000	Business Academy University Faculty of Pharmacy 🌐 faculty-pharmacy.com/en/nursing/ ✉ office@ffns.ac.rs
3	NURSING	3900	International Center of Professional Studies 🌐 international.iceps.edu.rs/nursing-study-program-about/ ✉ international@iceps.edu.rs
5.5	VETERINARY MEDICINE	5000	University of Belgrade Faculty of Veterinary Medicine 🌐 vet.bg.ac.rs/en/studies/integrated-academic-studies-in-english-language/ ✉ dekanat@vet.bg.ac.rs
3	SPORT, HEALTH AND BIOENGINEERING	4000	University of Kragujevac Faculty of Veterinary Medicine 🌐 kg.ac.rs/dokumenti/studijski_programi/unikg/SZB_Info.pdf ✉ studentska.sluzba@kg.ac.rs

BUSINESS, ECONOMICS, ADMINISTRATION AND LAW

4	ECONOMICS	2500	University of Niš Faculty of Economics 🌐 eknfak.ni.ac.rs/en/Studies-in-English.php ✉ foreign-students@eknfak.ni.ac.rs
4	ECONOMICS AND BUSINESS MANAGEMENT	3000	University of Kragujevac Faculty of Economics 🌐 ekfak.kg.ac.rs/en/studies/undergraduate-academic-studies-in-english/structure-of-program ✉ ekfak@kg.ac.rs
4	BUSINESS ECONOMICS	3900	University Singidunum Faculty of Business 🌐 singidunum.ac.rs/admission/study-programme/business-economics ✉ study@singidunum.ac.rs
4	TOURISM, HOSPITALITY AND FOOD ECONOMICS	3900	University Singidunum Faculty of Business 🌐 singidunum.ac.rs/admission/study-programme/tourism-and-hospitality ✉ study@singidunum.ac.rs

Duration of the programme (total no. of years)	STUDY PROGRAMME	Tuition fee per academic year ² (in EUR)	INSTITUTION (University/Faculty)
--	-----------------	---	----------------------------------

INFORMATION AND COMMUNICATION TECHNOLOGIES

4	SOFTWARE ENGINEERING	3000	University of Belgrade School of Electrical Engineering 🌐 etf.bg.ac.rs/en ✉ stud_sluzba@etf.bg.ac.rs
4	INFORMATION SYSTEM ENGINEERING	6000	University of Novi Sad Faculty of Technical Sciences 🌐 ftn.uns.ac.rs/709957203/information-systems-engineering ✉ sdristic@uns.ac.rs ✉ iro.ftn@uns.ac.rs
4	INFORMATION TECHNOLOGIES	2200	University of Kragujevac Faculty of Technical Sciences 🌐 ftn.kg.ac.rs/en/index.php?prikaz=program&spr=OAS_IT_23 ✉ dekanat@ftn.kg.ac.rs
4	ELECTRICAL ENGINEERING AND COMPUTING	3500	University of Niš Faculty of Electronic Engineering 🌐 elfak.ni.ac.rs/en/ 🌐 elfak.ni.ac.rs/study-in-english ✉ efinfo@elfak.ni.ac.rs
4	ELECTRICAL ENGINEERING AND COMPUTER SCIENCE	3000	University of Kragujevac Faculty of Engineering 🌐 fin.kg.ac.rs/en/studies/bachelor-academic-studies/electrical-engineering-and-computer-science ✉ kontakt@fink.rs
4	INFORMATION TECHNOLOGY	3900	University Singidunum Faculty of Informatics and Computing 🌐 singidunum.ac.rs/admission/study-programme/information-technology
4	APPLIED ARTIFICIAL INTELLIGENCE	3900	University Singidunum Faculty of Informatics and Computing 🌐 singidunum.ac.rs/admission/study-programme/applied-artificial-intelligence ✉ study@singidunum.ac.rs

ENGINEERING, MANUFACTURING AND CONSTRUCTION

3	MECHANICAL ENGINEERING	1800	University of Belgrade Faculty of Mechanical Engineering 🌐 en.mas.bg.ac.rs/education/bachelor-academic-studies/ ✉ vbuljak@mas.bg.ac.rs
4	ENERGY AND PROCESS ENGINEERING	5000	University of Novi Sad Faculty of Technical Sciences 🌐 ftn.uns.ac.rs/n1386094394/faculty-of-technical-sciences ✉ iro.ftn@uns.ac.rs

Duration of the programme (total no. of years)	STUDY PROGRAMME	Tuition fee per academic year ² (in EUR)	INSTITUTION (University/Faculty)
--	-----------------	---	----------------------------------

4	ELECTRICAL ENGINEERING AND COMPUTING	2000	University of Belgrade School of Electrical Engineering bit.ly/3BSJyso stud_sluzba@etf.bg.ac.rs
4	SOFTWARE AND INFORMATION ENGINEERING	3900	University Singidunum Faculty of Technical Sciences singidunum.ac.rs/admission/study-programme/software-and-data-engineering-english study@singidunum.ac.rs
3	MECHATRONICS	3250	Academy of Applied Studies Polytechnic Belgrade politehnika.edu.rs/en/ info@politehnika.edu.rs tmarikovic@plitehnika.edu.rs

NATURAL SCIENCES, MATHEMATICS AND STATISTICS

4	ENVIRONMENT AND SUSTAINABLE DEVELOPMENT	3300	University Singidunum singidunum.ac.rs/admission/study-programme/environment-and-sustainable-development study@singidunum.ac.rs
---	---	------	---

ARTS, HUMANITIES AND SPORTS

4	ENGLISH STUDIES	3900	University Singidunum singidunum.ac.rs/admission/study-programme/ba-in-english-studies study@singidunum.ac.rs
---	-----------------	------	---

POSTGRADUATE DEGREES - MASTER AND SPECIALIST PROGRAMMES (2nd Degree Programmes)

Master Programmes

Duration of the programme (total no. of years)	STUDY PROGRAMME	Tuition fee per academic year ² (in EUR)	INSTITUTION (University/Faculty)
--	-----------------	---	----------------------------------

MEDICAL SCIENCES

1	PUBLIC HEALTH	2900	University of Belgrade Faculty of Medicine sph.med.bg.ac.rs/ med.bg.ac.rs/ nenad.pavlovic@med.bg.ac.rs aljvrane@yahoo.co.uk ivanka.markovic@med.bg.ac.rs sagabgyu@yahoo.co
1	BIOETHICS	2000	
1	PHYSICAL ACTIVITY, HEALTH AND EXERCISE THERAPY	2000	

Duration of the programme (total no. of years)	STUDY PROGRAMME	Tuition fee per academic year ² (in EUR)	INSTITUTION (University/Faculty)
--	-----------------	---	----------------------------------

1	LONGEVITY AND ANTI-AGING MEDICINE	2500	University of Belgrade Faculty of Medicine med.bg.ac.rs/?p=30462&script=lat nenad.pavlovic@med.bg.ac.rs drhrncic@yahoo.com
3	HEALTHCARE	1600	High Medical College of Professional Studies Milutin Milankovic vmsmmilankovic.edu.rs/eng/index.php/mss-zdravstvena-nega vmsmmilankovic.edu.rs/eng/index.php/mss-fizioterapija vmsmmilankovic.edu.rs/eng/index.php/mss-medicinska-radiologija studentska@mmilankovic.edu.rs
3	PHYSIOTHERAPY	1600	
3	MEDICAL RADIOLOGY	1600	

BUSINESS, ECONOMICS, ADMINISTRATION AND LAW

1 or 2	EUROPEAN INTEGRATION (MEI)	2400	University of Belgrade Faculty of Law mei.ius.bg.ac.rs/ mppm.ius.bg.ac.rs/ ivana.rodic@ius.bg.ac.rs ljiljana.maric@ius.bg.ac.rs
1	PUBLIC PROCUREMENT MANAGEMENT	7200	

1	LAW AND GENDER	2400	University of Belgrade Faculty of Law lawgems.ius.bg.ac.rs/ ljiljana.maric@ius.bg.ac.rs ivana.rodic@ius.bg.ac.rs lawgem@ius.bg.ac.rs
---	----------------	------	---

1	CONTEMPORARY LEGAL STUDIES	1100	Union University School of Law en.pravnifakultet.edu.rs/ma-in-english/contemporary-legal-studies/enrollment/ pravnifakultet.edu.rs/pdf/dokumenti/Contemporary-Legal-Studies-Master-akademske-studije-MAS.pdf uros.jovanovic@pravnifakultet.edu.rs
---	----------------------------	------	---

1	INTERNATIONAL MASTER IN QUANTITATIVE FINANCE – IMQF	6000	University of Belgrade Faculty of Economics and Business ekof.bg.ac.rs/studies/master/master-studije-na-stranom-jeziku/international-master-in-quantitative-finance/?lang=en international.master@ekof.bg.ac.rs
---	---	------	--

1	MASTER IN APPLIED ECONOMICS	6000	University of Belgrade Faculty of Economics and Business ekof.bg.ac.rs/studies/master/master-studije-na-stranom-jeziku/international-master-in-applied-economics/?lang=en international.master@ekof.bg.ac.rs
---	-----------------------------	------	--

Duration of the programme (total no. of years)	STUDY PROGRAMME	Tuition fee per academic year ² (in EUR)	INSTITUTION (University/Faculty)
1 or 2	MASTER IN TAXATION	6000	University of Belgrade Faculty of Economics and Business and Faculty of Law ekof.bg.ac.rs/studies/master/master-studije-na-stranom-jeziku/international-master-in-taxation/?lang=en international.master@ekof.bg.ac.rs
1 or 2	BUSINESS INFORMATICS	6000	University of Belgrade Faculty of Economics and Business ekof.bg.ac.rs/studies/master/master-studije-na-stranom-jeziku/international-master-in-business-informatics/?lang=en international.master@ekof.bg.ac.rs
1.5	INTERNATIONAL BUSINESS AND MANAGEMENT	4900	University of Belgrade Faculty of Organizational Sciences ibm.fon.bg.ac.rs/ milica.jovanovic@fon.bg.ac.rs
2	ADVANCED DATA ANALYTICS IN BUSINESS	2500	University of Niš Faculty of Economics eknfak.ni.ac.rs/src/MAS-ADA.php master@eknfak.ni.ac.rs
1.5	ADVANCED DATA ANALYTICS	2500	University of Belgrade bg.ac.rs/studije-pri-univerzitetu/ jokicj@rect.bg.ac.rs
1	BUSINESS ECONOMICS	4500	University Singidunum singidunum.ac.rs/admission-master/study-programme/business-economics study@singidunum.ac.rs
1	FINANCIAL MANAGEMENT OF PUBLIC ADMINISTRATION	3300	University of Kragujevac Faculty of Economics ekfak.kg.ac.rs/en/studies/mas-studies/study-programs/mas-financial-management-of-public-administration mcupic@kg.ac.rs
1	BUSINESS SYSTEMS IN TOURISM AND HOSPITALITY	4500	University Singidunum The Faculty of Tourism and Hospitality Management singidunum.ac.rs/admission-master/study-programme/business-systems-in-tourism-and-hospitality study@singidunum.ac.rs

Duration of the programme (total no. of years)	STUDY PROGRAMME	Tuition fee per academic year ² (in EUR)	INSTITUTION (University/Faculty)
1	CULTURAL POLICY AND MANAGEMENT	2100 - 2300	University of Arts in Belgrade arts.bg.ac.rs/en/studies/degrees-in-english/cultural-policy-and-management-internationalism-and-mediation-in-the-balkans/ coordinator@arts.bg.ac.rs
1	CULTURAL TOURISM AND CULTURAL HERITAGE MANAGEMENT	3500	University of Novi Sad Faculty of Sciences pmf.uns.ac.rs/en/master-in-cultural-tourism-and-cultural-heritage-management-2021/ iro@pmf.uns.ac.rs
1	ENGLISH LANGUAGE AND LITERATURE	750	University of Niš Faculty of Philosophy intl.filfak.ni.ac.rs/en/study-programmes-and-course-catalogue/master-academic-studies international@filfak.ni.ac.rs
1	APPLIED ANGLISTICS	4500	University Singidunum singidunum.ac.rs/admission-master/study-programme/applied-anglistics study@singidunum.ac.rs
1	PEACE, SECURITY AND DEVELOPMENT	1500	University of Belgrade Faculty of Political Sciences fpm.bg.ac.rs/medjunarodna-saradnja/ma-in-peace-security-and-development nemanja.dzuverovic@fpm.bg.ac.rs katarina.petrovic@fpm.bg.ac.rs marko.kovacevic@fpm.bg.ac.rs
2	JOINT MASTER'S PROGRAMME IN SOUTH-EAST EUROPEAN STUDIES	3900 EUR for Balkan countries 4900 EUR for other countries	University of Belgrade Faculty of Political Sciences seestudies.eu/ dusan.pavlovic@fpm.bg.ac.rs gordana.ristic@fpm.bg.ac.rs
1	SOCIETY, STATE, TRANSITION	6375	University of Belgrade Faculty of Philosophy f.bg.ac.rs/en2 hdajc@f.bg.ac.rs iro@f.bg.ac.rs
1	GENDER STUDIES	3000	University of Novi Sad uns.ac.rs/index.php/en/faculties/university-centres/ucimsi/mas-rodne-studije artur.bjelica@uns.ac.rs natasa.hrabovski@uns.ac.rs jasmina.biro@uns.ac.rs

ARTS, HUMANITIES AND SPORTS

Duration of the programme (total no. of years)	STUDY PROGRAMME	Tuition fee per academic year ² (in EUR)	INSTITUTION (University/Faculty)
--	-----------------	---	----------------------------------

1	INTERNATIONAL TEACHER EDUCATION	3000	University of Kragujevac Faculty of Education, Jagodina pefja.kg.ac.rs/mitep/ pefjagodina@pefja.kg.ac.rs
1	PHYSICAL EDUCATION AND SPORT	2800	University of Niš Faculty of Sport and Physical Education fsfv.ni.ac.rs/en/studies/second-degree-studies/master-academic-studies-physical-education-and-sport markoaleksandrovic@gmail.com info@fsfv.ni.ac.rs

NATURAL SCIENCES, MATHEMATICS AND STATISTICS

1.5	REPRODUCTIVE BIOLOGY	3500	University of Novi Sad Faculty of Sciences pmf.uns.ac.rs/en/studies/study-programs/reproductive-biology-2019/ iro@pmf.uns.ac.rs
2	APPLIED MATHEMATICS: DATA SCIENCE	2500	University of Novi Sad Faculty of Sciences pmf.uns.ac.rs/en/studies/study-programs/applied-mathematics-2020/ iro@pmf.uns.ac.rs
1	DATA SCIENCE	4500	University Singidunum singidunum.ac.rs/admission-master/study-programme/environment-and-sustainable-development study@singidunum.ac.rs
2	ASTROPHYSICS AND SPACE SCIENCE	6250	University of Belgrade Faculty of Mathematics poincare.matf.bg.ac.rs/katedre/astronomija/beta/index.php?lang=eng&dir=edu&page=mass master-mass.eu/ dragana.ilic@matf.bg.ac.rs milica.vucetic@matf.bg.ac.rs
1.5	COMPUTATIONAL PHYSICS	9810	University Singidunum singidunum.ac.rs/admission-master/study-programme/computational-physics study@singidunum.ac.rs
2	DANUBE AGRIFOOD MASTER - DAFM Joint master program	1000	University of Novi Sad Faculty of Agriculture polj.uns.ac.rs/sr/taxonomy/term/98 dragana.krajinovic@polj.uns.ac.rs

Duration of the programme (total no. of years)	STUDY PROGRAMME	Tuition fee per academic year ² (in EUR)	INSTITUTION (University/Faculty)
--	-----------------	---	----------------------------------

2	GEOSPATIAL RESEARCH FOR SUSTAINABLE DEVELOPMENT	2000	University of Belgrade Faculty of Geography gef.bg.ac.rs/mas-geospatial-research-for-sustainable-development/ dekanat@gef.bg.ac.rs
1	ENVIRONMENTAL PROTECTION IN AGRICULTURE	2200	University of Belgrade Faculty of Agriculture agrif.bg.ac.rs/en/studies/master-of-academic-studies/environmental-protection-in-agriculture soljaca@agrif.bg.ac.rs
1	CLIMATE CHANGE AND ADAPTATION ON CLIMATE CHANGE	1200	University of Belgrade bg.ac.rs/studije-pri-univerzitetu/ jokicj@rect.bg.ac.rs
1	ENVIRONMENT AND SUSTAINABLE DEVELOPMENT	4500	University Singidunum singidunum.ac.rs/admission-master/study-programme/environment-and-sustainable-development study@singidunum.ac.rs

INFORMATION AND COMMUNICATION TECHNOLOGY

1.5	ADVANCED INFORMATION TECHNOLOGY IN DIGITAL TRANSFORMATION	3700	University of Belgrade School of Electrical Engineering etf.bg.ac.rs/en stud_sluzba@etf.bg.ac.rs
1.5	MASTER OF INFORMATION TECHNOLOGY	3000	University of Kragujevac kg.ac.rs/dokumenti/studijski_programi/unikg/IT_en.pdf kg.ac.rs/dokumenti/studijski_programi/unikg/RKI_en.pdf kg.ac.rs/dokumenti/studijski_programi/unikg/VI_en.pdf studentska.sluzba@kg.ac.rs
1.5	COMPUTER GAMES DEVELOPMENT	3000	
2	ARTIFICIAL INTELLIGENCE	3000	
1	INFORMATION SYSTEMS ENGINEERING	8000	University of Novi Sad Faculty of Technical Sciences ftn.uns.ac.rs/n1386094394/faculty-of-technical-sciences iro.ftn@uns.ac.rs
1	COMPUTING AND CONTROL ENGINEERING	8000	
2	ARTIFICIAL INTELLIGENCE	2500	University of Novi Sad Faculty of Sciences pmf.uns.ac.rs/en/studies/study-programs/msc-artificial-intelligence-2022/ iro@pmf.uns.ac.rs

Duration of the programme (total no. of years)	STUDY PROGRAMME	Tuition fee per academic year ² (in EUR)	INSTITUTION (University/Faculty)
1	COMPUTING AND INFORMATICS	4000	University of Niš Faculty of Electronic Engineering 🌐 elfak.ni.ac.rs/en/ ✉ efinfo@elfak.ni.ac.rs
1	CONTROL SYSTEMS	4000	
1	COMMUNICATION AND INFORMATION TECHNOLOGIES	4000	
1	CONTEMPORARY INFORMATION TECHNOLOGIES	4500	University Singidunum 🌐 singidunum.ac.rs/admission-master/study-programme/modern-information-technologies 🌐 singidunum.ac.rs/admission-master/study-programme/environment-and-sustainable-development ✉ study@singidunum.ac.rs
1	SOFTWARE AND INFORMATION ENGINEERING	4500	
1	INTELLIGENT AND ADVANCED SOFTWARE SYSTEMS	5000	Metropolitan University 🌐 metropolitan.ac.rs/en/ ✉ upis@metropolitan.ac.rs
1	INFORMATION TECHNOLOGIES AND SYSTEMS: INFORMATION SYSTEMS OF ORGANISATIONS	5000	
1	INFORMATION TECHNOLOGIES AND SYSTEMS: CYBER SECURITY	5000	
1	MASTER IN COMPUTATIONAL FINANCE	6000	Union University School of Computing 🌐 mcf.raf.edu.rs/ ✉ burosevic@raf.rs

ENGINEERING, MANUFACTURING AND CONSTRUCTION

1	ELECTRICAL ENGINEERING AND COMPUTING	9000	University of Belgrade School of Electrical Engineering 🌐 etf.bg.ac.rs/en ✉ stud_sluzba@etf.bg.ac.rs
2	ARCHITECTURE	4000	University of Belgrade Faculty of Architecture 🌐 arh.bg.ac.rs/en/studies/master-studies/?pismo=lat ✉ prodekan.za.nastavu@arh.bg.ac.rs
2	INTEGRAL URBANISM	4000	University of Belgrade Faculty of Architecture 🌐 arh.bg.ac.rs/en/studies/study-programmes/?pismo=lat ✉ prodekan.za.nastavu@arh.bg.ac.rs
1	ARCHITECTURE	9600	University of Novi Sad Faculty of Technical Sciences 🌐 ftn.uns.ac.rs/n1386094394/faculty-of-technical-sciences ✉ iro.ftn@uns.ac.rs
1	CIVIL ENGINEERING	5000	

Duration of the programme (total no. of years)	STUDY PROGRAMME	Tuition fee per academic year ² (in EUR)	INSTITUTION (University/Faculty)
1	DISASTER RISK MANAGEMENT AND FIRE SAFETY	5000	University of Novi Sad Faculty of Technical Sciences 🌐 ftn.uns.ac.rs/n1386094394/faculty-of-technical-sciences ✉ iro.ftn@uns.ac.rs
1	OCCUPATIONAL SAFETY ENGINEERING	5000	
1	ENERGY AND PROCESS ENGINEERING	5000	
1	ENVIRONMENTAL ENGINEERING	5000	
1	INDUSTRIAL ENGINEERING	5000	
1	GRAPHIC ENGINEERING AND DESIGN	5000	
1	TECHNICAL MECHANICS AND TECHNICAL DESIGN	5000	
1	PRODUCTION ENGINEERING	3000	
1	ENGINEERING MANAGEMENT	6000	University of Novi Sad Faculty of Technical Sciences 🌐 ftn.uns.ac.rs/n1386094394/faculty-of-technical-sciences ✉ iro.ftn@uns.ac.rs ✉ blalic@uns.ac.rs
2	ENGINEERING MANAGEMENT MBA	6000	
1	POWER, ELECTRONIC AND TELECOMMUNICATION ENGINEERING	6500	University of Novi Sad Faculty of Technical Sciences 🌐 ftn.uns.ac.rs/n1386094394/faculty-of-technical-sciences ✉ iro.ftn@uns.ac.rs
1	SCENE ARCHITECTURE AND DESIGN	8000	University of Novi Sad Faculty of Technical Sciences 🌐 ftn.uns.ac.rs/n1386094394/faculty-of-technical-sciences ✉ iro.ftn@uns.ac.rs
1	SCENE ARCHITECTURE AND TECHNIQUE	8000	
1	MECHATRONICS	8000	University of Novi Sad Faculty of Technical Sciences 🌐 ftn.uns.ac.rs/n1386094394/faculty-of-technical-sciences ✉ iro.ftn@uns.ac.rs
1	ELECTRICAL POWER ENGINEERING	4000	University of Niš Faculty of Electronic Engineering 🌐 elfak.ni.ac.rs/en/ ✉ efinfo@elfak.ni.ac.rs
1	ELECTRONICS AND MICROSYSTEMS	4000	
2	MECHANICAL ENGINEERING	2400	University of Belgrade Faculty of Mechanical Engineering 🌐 en.mas.bg.ac.rs/education/master-academic-studies/ ✉ vbuljak@mas.bg.ac.rs
1	BIOENGINEERING	4000	University of Kragujevac Faculty of Engineering 🌐 fin.kg.ac.rs/en/studies/master-academic-studies/bioengineering ✉ kontakt@fink.rs

Duration of the programme (total no. of years)	STUDY PROGRAMME	Tuition fee per academic year ² (in EUR)	INSTITUTION (University/Faculty)
--	-----------------	---	----------------------------------

1	BIOCHEMICAL ENGINEERING AND BIOTECHNOLOGY	4000	University of Belgrade Faculty of Technology and Metallurgy tmf.bg.ac.rs/en studentska@tmf.bg.ac.rs
1	CHEMICAL ENGINEERING	4000	
1	ENVIRONMENTAL ENGINEERING	4000	
1	MATERIALS ENGINEERING	4000	
1	METALLURGICAL ENGINEERING	4000	
1	DIGITAL PROCESS ENGINEERING	4000	

2	FORESTRY AND NATURAL RESOURCES MANAGEMENT	1450	University of Belgrade Faculty of Forestry sfb.bg.ac.rs/studenti/konkursi-za-upis-studenata/master-s-degree-studies-in-english-2022/ marko.perovic@sfb.bg.ac.rs
---	---	------	--

1	PETROLEUM ENGINEERING	3900	University of Belgrade Faculty of Mining and Geology arhiva.rect.bg.ac.rs/files/en/education/enrollment/RGF-MAS-2023.pdf arhiva.rect.bg.ac.rs/files/en/education/enrollment/RGF-MAS-2023.pdf vesna.karovic@rgf.bg.ac.rs
---	-----------------------	------	---

POSTGRADUATE DEGREES - MASTER AND SPECIALIST PROGRAMMES (2nd Degree Programmes)

Specialist Studies

Duration of the programme (total no. of years)	STUDY PROGRAMME	Tuition fee per academic year ² (in EUR)	INSTITUTION (University/Faculty)
--	-----------------	---	----------------------------------

MEDICAL SCIENCES³

1	COSMETOLOGY	2000	University of Belgrade Faculty of Pharmacy pharmacy.bg.ac.rs/en milica.benedik@pharmacy.bg.ac.rs
1.5	PHARMACEUTICAL CARE	2000	
1	PHARMACEUTICAL MANAGEMENT AND MARKETING	2000	
1	TOXICOLOGICAL RISK ASSESSMENT	2000	

³ Specialist Academic Studies last for one year and carry 60 ECTS; students who have achieved at least 300 ECTS during previous studies are eligible to apply for those programmes.

PHD PROGRAMMES (3rd Degree Programmes)

Duration of the programme (total no. of years)	STUDY PROGRAMME	Tuition free per academic year ² (in EUR)	INSTITUTION (University/Faculty)
--	-----------------	--	----------------------------------

MEDICAL SCIENCES

3	BASIC AND CLINICAL RESEARCH IN DENTISTRY	5000	University of Belgrade Faculty of Dentistry https://shorturl.at/6XdWu jasminka.tekic@stomf.bg.ac.rs
---	--	------	---

3	PHARMACEUTICAL SCIENCES	5000	University of Belgrade Faculty of Pharmacy pharmacy.bg.ac.rs/en milica.benedik@pharmacy.bg.ac.rs
---	-------------------------	------	--

3	MEDICAL SCIENCES	4000	University of Belgrade Faculty of Medicine med.bg.ac.rs/?page_id=12237 dragana.popovic@med.bg.ac.rs
---	------------------	------	--

3	MEDICAL SCIENCES	4000	University of Kragujevac Faculty of Medical Sciences medf.kg.ac.rs/en/index.php iasme@fmn.kg.ac.rs
---	------------------	------	--

3	PHARMACEUTICAL SCIENCES	4000	University of Kragujevac Faculty of Medical Sciences medf.kg.ac.rs/en/index.php phias@fmn.kg.ac.rs
---	-------------------------	------	--

ARTS, HUMANITIES AND SPORTS

3	PHYSICAL EDUCATION AND SPORTS	3000	University of Belgrade Faculty of Sports and Physical Education dif.bg.ac.rs/en/curriculum-2021-22/doctoral-academic-studies slobodanka.dobrijevic@fsfv.bg.ac.rs
---	-------------------------------	------	---

3	COMPOSITION	3600 - 7200	University of Arts Faculty of Music fmu.bg.ac.rs fmu.bg.ac.rs/en fmuinfo@fmu.bg.ac.rs
3	PERFORMING ARTS	3600 - 7200	

NATURAL SCIENCES, MATHEMATICS AND STATISTICS

3	BIOLOGY	8000	University of Belgrade Faculty of Biology bio.bg.ac.rs/doktorske-studije prodekan.poslediplomske@bio.bg.ac.rs
3	ECOLOGY	8000	
3	MOLECULAR BIOLOGY	8000	

Duration of the programme (total no. of years)	STUDY PROGRAMME	Tuition fee per academic year ² (in EUR)	INSTITUTION (University/Faculty)
3	METEOROLOGY	4000	University of Belgrade Faculty of Physics ff.bg.ac.rs/Engleski/Doctoral/Doctoral.html sstevan@ff.bg.ac.rs mirjana@ff.bg.ac.rs
3	PHYSICS	4000	
3	DOCTORAL SCHOOL OF MATHEMATICS	4000	University of Novi Sad Faculty of Sciences pmf.uns.ac.rs/en/studies/study-programs/doctoral-school-of-mathematics-2024/ iro@pmf.uns.ac.rs
3	GEOGRAPHY	4000	University of Novi Sad Faculty of Sciences pmf.uns.ac.rs/en/studies/study-programs/phd-in-geography-2024/ iro@pmf.uns.ac.rs
3	TOURISM	4000	University of Novi Sad Faculty of Sciences pmf.uns.ac.rs/en/studies/study-programs/phd-in-tourism-2024/ iro@pmf.uns.ac.rs
3	BIOLOGICAL SCIENCES	5000	University of Novi Sad Faculty of Sciences pmf.uns.ac.rs/en/studies/study-programs/phd-biological-sciences-2021/ iro@pmf.uns.ac.rs
3	ECOLOGICAL SCIENCES	3500	University of Novi Sad Faculty of Sciences pmf.uns.ac.rs/en/studies/study-programs/phd-ecology-2021/ iro@pmf.uns.ac.rs
3	MOLECULAR BIOLOGY	5000	University of Novi Sad Faculty of Sciences pmf.uns.ac.rs/en/studies/study-programs/ iro@pmf.uns.ac.rs
3	MATHEMATICS	4500	University of Belgrade Faculty of Mathematics upis.matf.bg.ac.rs/das/ arhiva.rect.bg.ac.rs/files/en/education/enrollment/General-DAS-2023.pdf, arhiva.rect.bg.ac.rs/files/sr/upis/doktorske-akademske/MTF-2023.pdf miljan.knezevic@matf.bg.ac.rs
3	INFORMATICS	4500	
3	ASTRONOMY AND ASTROPHYSICS	4500	
3	PHD SCHOOL OF MATHEMATICS	2500	University of Niš Faculty of Sciences and Mathematics operator.pmf.ni.ac.rs/doktorskaskola/doktorskaskola.htm dragandjordjevic70@gmail.com

Duration of the programme (total no. of years)	STUDY PROGRAMME	Tuition fee per academic year ² (in EUR)	INSTITUTION (University/Faculty)
3	ADVANCED SECURITY SYSTEMS	4500	University Singidunum singidunum.ac.rs/admission-phd/study-programme/advanced-security-systems mpopovic@singidunum.ac.rs study@singidunum.ac.rs
3	PHD SCHOOL OF MATHEMATICS	4000	University of Kragujevac Faculty of Science operator.pmf.ni.ac.rs/doktorskaskola/doktorskaskola.htm stevan.pilipovic@gmail.com
3	AGRIFOOD VALUE CHAIN	4800	University of Belgrade Faculty of Agriculture agrif.bg.ac.rs/en/studies/doctoral-studies/study-programme-agrifood-value-chain idjekic@agrif.bg.ac.rs
3	ENVIRONMENT AND SUSTAINABLE DEVELOPMENT	4200	University Singidunum singidunum.ac.rs/admission-phd/study-programme/environment-and-sustainable-development mpopovic@singidunum.ac.rs study@singidunum.ac.rs

INFORMATION AND COMMUNICATION TECHNOLOGIES

3	INFORMATION SYSTEMS ENGINEERING	9000	University of Novi Sad Faculty of Technical Sciences ftn.uns.ac.rs/n1386094394/faculty-of-technical-sciences iro.ftn@uns.ac.rs
3	ELECTRICAL ENGINEERING AND COMPUTING	5000	University of Niš Faculty of Electronic Engineering elfak.ni.ac.rs/en/ efinfo@elfak.ni.ac.rs
3	INFORMATION TECHNOLOGIES	2500	University of Kragujevac Faculty of Technical Sciences ftn.kg.ac.rs/en/index.php?prikaz=doktorskeen dekanat@ftn.kg.ac.rs

ENGINEERING, MANUFACTURING AND CONSTRUCTION

3	ELECTRICAL ENGINEERING AND COMPUTING	10000	University of Belgrade School of Electrical Engineering fetf.bg.ac.rs/en stud_sluzba@etf.bg.ac.rs
---	--------------------------------------	-------	--

Duration of the programme (total no. of years)	STUDY PROGRAMME	Tuition fee per academic year ² (in EUR)	INSTITUTION (University/Faculty)
3	CIVIL ENGINEERING	5000	University of Novi Sad Faculty of Technical Sciences ftn.uns.ac.rs/n1386094394/faculty-of-technical-sciences iro.ftn@uns.ac.rs
3	DISASTER RISK MANAGEMENT AND FIRE SAFETY	5000	
3	ENVIRONMENTAL ENGINEERING	5000	
3	MECHANICAL ENGINEERING	4000	
3	POWER, ELECTRONIC AND TELECOMMUNICATION ENGINEERING	7000	
3	SCENE DESIGN	8000	
3	INDUSTRIAL ENGINEERING / ENGINEERING MANAGEMENT	9000	
3	MECHATRONICS	9000	University of Novi Sad Faculty of Technical Sciences ftn.uns.ac.rs/n1386094394/faculty-of-technical-sciences ivanas@uns.ac.rs
3	ARCHITECTURE	11000	University of Novi Sad Faculty of Technical Sciences ftn.uns.ac.rs/n1386094394/faculty-of-technical-sciences iro.ftn@uns.ac.rs
3	ARCHITECTURE AND URBANISM	5000	University of Belgrade Faculty of Architecture arh.bg.ac.rs/en/studies/doctoral-studies-phd/?pismo=lat prodekan.za.nauku@arh.bg.ac.rs
3	CIVIL ENGINEERING	4000	University of Belgrade Faculty of Civil Engineering grf.bg.ac.rs/studije/sp/e?spid=43 gfnauka@grf.bg.ac.rs
3	GEODESY AND GEOINFORMATICS	4000	
3	INDUSTRIAL ENGINEERING AND ENGINEERING MANAGEMENT	4000	University of Kragujevac Faculty of Engineering fin.kg.ac.rs/en/studies/doctoral-studies/industrial-engineering-and-engineering-management kontakt@fink.rs
3	BIOENGINEERING	4000	University of Kragujevac Faculty of Engineering fin.kg.ac.rs/en/studies/doctoral-studies/bioengineering kontakt@fink.rs
3	MECHANICAL ENGINEERING	2400	University of Belgrade Faculty of Mechanical Engineering en.mas.bg.ac.rs/education/doctoral-academic-studies/ vbuljak@mas.bg.ac.rs

Duration of the programme (total no. of years)	STUDY PROGRAMME	Tuition fee per academic year ² (in EUR)	INSTITUTION (University/Faculty)
3	MECHANICAL ENGINEERING	2200	University of Niš Faculty of Mechanical Engineering masfak.ni.ac.rs/index.php/en/ milos.simonovic@masfak.ni.ac.rs info@masfak.ni.ac.rs
3	BIOCHEMICAL ENGINEERING AND BIOTECHNOLOGY	10000	University of Belgrade Faculty of Technology and Metallurgy tmf.bg.ac.rs/en studentska@tmf.bg.ac.rs
3	CHEMICAL ENGINEERING	10000	
3	CHEMISTRY	10000	
3	ENVIRONMENTAL ENGINEERING	10000	
3	MATERIALS ENGINEERING	10000	
3	METALLURGICAL ENGINEERING	10000	
3	INTELLIGENT SOFTWARE ENGINEERING	4500	University Singidunum singidunum.ac.rs/admission-phd/study-programme/intelligent-software-engineering mpopovic@singidunum.ac.rs study@singidunum.ac.rs

BUSINESS, ECONOMICS, ADMINISTRATION AND LAW

3	BUSINESS ECONOMICS	15000	University Business Academy in Novi Sad Faculty of Economics and Engineering Management fimek.edu.rs/studije.html rprodanovic@fimek.edu.rs
3	CONTEMPORARY BUSINESS DECISION MAKING	4500	University Singidunum singidunum.ac.rs/admission-phd/study-programme/contemporary-business-decision-making mpopovic@singidunum.ac.rs study@singidunum.ac.rs
3	TOURISM MANAGEMENT	4500	University Singidunum singidunum.ac.rs/admission-phd/study-programme/tourism-management mpopovic@singidunum.ac.rs study@singidunum.ac.rs

Additional opportunities for studying in Serbia are also available at the Faculty of Occupational Safety, University of Niš.

Please check their website for more information znrfak.ni.ac.rs/ENG/09-Studies.html or contact them at international@znrfak.ni.ac.rs and evica.stojiljkovic@znrfak.ni.ac.rs.

Currently, there are around 180 study programmes at all study levels taught entirely or partially in English. These are not the only programmes accredited in foreign languages. There are also programmes conducted in English and Serbian that might not be fully available in English this academic year. Those programmes are especially suitable for shorter student mobilities through Erasmus+ or other mobility programmes. Search for those programmes in the StudyInSerbia database for international students: studyinserbia.rs.

Centers of Serbian as a foreign language offer Serbian language courses in Belgrade, Novi Sad, Niš and Kragujevac.

Classes are usually organised as preparatory programmes that last one or two semesters. There are individual and group classes, summer schools and online courses.

START!

STEP 1

Find a suitable programme

To find a suitable programme, you can check the list of study programmes above or search for a programme in the Study in Serbia database studyinserbia.rs.

It is important to note that all study programmes and higher education institutions featured in this catalogue are accredited, which means they meet specific quality requirements for accreditation set up by the relevant authorities in the Republic of Serbia.

STEP 3

Check the application procedure and deadlines

Undergraduate admissions usually start in June. Intake to Master and PhD studies typically begins in September or October. Please note that application deadlines differ from programme to programme. Check the websites of higher education institutions to learn more about the application procedure and deadlines.

STEP 5

Prepare necessary documents and apply

Application documents usually include a completed application form, a copy of the passport/ID, transcripts of records and/or proof of acquired academic qualifications, confirmation of application fee payment etc. Check with the institution of your choice which documents you need to submit. Some documents may require a certified translation. At this stage you can usually submit the documents electronically or by post.

STEP 2

Check academic requirements

Bachelor	Four-year secondary school diploma, an entrance exam
Master	First cycle or bachelor degree that comprises 180 ECTS credits (3-year full-time studies) or 240 ECTS credits (4-year full-time studies), an entrance exam
PhD	Bachelor and master degrees (a minimum of 300 ECTS credits in total)

STEP 4

Get in touch with the higher education institution

If you are interested in a study programme featured in this publication, contact the higher education institution that offers the programme if you have any questions. Contact information can be found on the list of study programmes. If you are interested in any other programme, look for it in the Study in Serbia database or on the institution's website and find contact information. You can also email us at studyinserbia@tempus.ac.rs if you need any additional help.

STEP 6

Get your diploma(s) recognised

If you are interested in bachelor studies, your high school diploma should be recognised by the ENIC/NARIC Centre (azk.gov.rs/enic_naric.php) before you enrol in a study programme.

If you are continuing your studies in Serbia, contact the chosen institution (university or academy) to start the recognition process of your previous degrees. This process can be lengthy, so reach out to the relevant institutions well in advance.

LEARN...

... 12 steps to Study in Serbia

SHARE YOUR
EXPERIENCES!

STEP 7

Take and pass an entrance exam

To be eligible to enrol in a university or college, you would most likely need to take and pass an entrance exam. Entrance exams are usually organised in June for undergraduate and in September/October for postgraduate studies. There is not one universal test all candidates need to take; entrance exams differ from programme to programme.

STEP 9

Apply for a visa

Most international students need a visa to come to Serbia for an entrance exam, so make sure to check if you need it at <https://www.bazaobrazovanja.rs/en/living-in-serbia/visa-and-permits>. If you do, fill in the visa application form and submit it to the nearest Serbian embassy or consulate along with the rest of the required documents. Once you get accepted to a university/faculty, you will receive a conditional acceptance letter. Use that letter to apply for a type D (long-term) visa. If you are granted a type D visa, you need to apply for a residence permit after you arrive in Serbia.

STEP 11

Apply for a temporary residence permit

International students must apply for a residence permit upon their arrival in Serbia, which needs to be extended every year. To learn more, please visit the Study in Serbia website: <https://www.bazaobrazovanja.rs/en/living-in-serbia/visa-and-permits>

STEP 8

Formally enrol and pay the tuition fee

To complete your enrolment, you need to submit a confirmation of tuition fee payment, along with other documents, such as the certificate stating that your previously earned degree(s) is (are) acceptable (recognised) in Serbia. You may also be asked to submit additional documents.

Tuition fees should be paid in full, but some institutions offer the possibility of paying in instalments.

STEP 10

Find accommodation

International students can rent an entire flat for themselves or share it with other students. Look for accommodation in advance and contact the International Office at your university/faculty to check if they can assist you in finding a place to stay.

STEP 12

Study and enjoy student life

Go to classes regularly. In most cases, class attendance is mandatory and you are allowed to skip just a few sessions per semester.

Get a student card to receive discounts for different goods and services (intercity busses, restaurants, museums, cafes etc.). In addition, student cardholders can dine in student canteens at discounted prices.

Travel and discover Serbia and Europe to the fullest! Get engaged in student organisations to make new friends, learn about Serbian higher education and have fun!

If you need any help during your stay in Serbia, visit the Info Centre for international students in Belgrade, 39/I Terazije, or send us an e-mail to studyinserbia@tempus.ac.rs.

LEARN...

Did you know that there is a possibility of going on a student exchange to another European country while studying in Serbia? Through various student exchange programmes, such as Erasmus+ or CEEPUS, Serbian higher education institutions offer many opportunities for student exchanges and traineeships abroad.

ERASMUS+ AT A GLANCE

Erasmus+ is an EU-funded programme for education, training, youth and sport. The programme offers the possibility of spending a study period abroad to students who completed a minimum of two semesters of studies. Erasmus+ also allows students to undertake a traineeship in a company, enterprise or another relevant workplace during their studies. Erasmus exchange students are exempt from paying tuition fees for their studies and traineeships, and there are some grants available to help with living costs.

MOBILITY TYPES

1. Student mobility for studies: Student mobility for studies: from 2 to 12 months of physical mobility. Students may also combine shorter physical mobility with a virtual component. In addition, any student may participate in blended intensive programmes (physical mobility of 5 to 30 days combined with virtual mobility).
2. Student mobility for traineeships: a work placement abroad to upgrade professional skills. A traineeship cannot be shorter than two months or longer than one year.
3. Mobility for studies/traineeships for doctoral candidates: from 5 to 30 days or from 2 to 12 months of physical mobility.

HOW TO APPLY?

Applications are usually submitted through your home university's Erasmus or International Office. To apply for this programme, contact your home institution to receive more information about exchange possibilities.

WHO CAN APPLY?

To be eligible you have to be enrolled in a higher education institution that is part of the Erasmus+ programme;

The Foundation Tempus is responsible for the Erasmus+ programme in Serbia. For more information on the Erasmus+ mobility opportunities, please visit <https://erasmusplus.rs/scholarships/>.

Erasmus+
Enriching lives, opening minds.



...exchange programmes

CEEPUS IN A NUTSHELL

CEEPUS is an exchange programme carried out in 15 Central-European countries. The programme offers short-term and long-term mobility opportunities and allows students to spend a study period abroad or conduct research for a master thesis or doctoral dissertation at a partner higher education institution.

CEEPUS operates through university networks comprising at least three higher education institutions (or their faculties and departments) from the CEEPUS countries. There are two types of mobility: mobility inside CEEPUS networks (network mobility) and mobility outside CEEPUS networks (freemover).

CEEPUS mobility grants include paid tuition and monthly remuneration. Depending on the country, students can also be entitled to free accommodation and discounted meals. To learn more about CEEPUS and find the list of participating countries, please check the official website of the programme: ceepus.info.

HOW TO APPLY?

Applications have to be submitted online through the official CEEPUS website. The application deadline for the summer semester is 31 October and for the winter semester is 15 June. Freemovers can apply until 30 November.

Contact your home institution in Serbia to check whether it takes part in the CEEPUS programme. For more detailed information about CEEPUS, visit <https://www.ceepus.info/> or the website of the National CEEPUS Office in Serbia at <https://tempus.ac.rs/sta-radimo/ceepus/>.

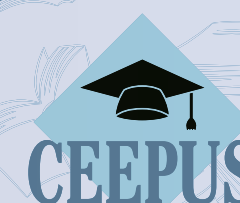
MOBILITY TYPES

1. **Short-term student mobility:** lasts a maximum of 3 months, intended for undertaking research for a master thesis or a doctoral dissertation;
2. **Long-term student mobility:** lasts a minimum of 3 months and a maximum of two academic semesters, enables students to spend part of their studies at another higher education institution in one of the participating countries (15 Central-European countries).

WHO CAN APPLY?

To be eligible:

1. You have to be a student at a higher education institution in a CEEPUS country who completed at least two semesters of studies;
2. To be a citizen of a CEEPUS member state. International students who do not have the citizenship of a CEEPUS member state can also apply. However, they need to submit an "equal status document" (usually a residence permit or visa).



EXPERIENCE...



EXPERIENCE...

The north of the country is covered in golden-green grain fields, which are intersected by many rivers. The central and southern parts are predominantly mountainous and rich in rivers and lakes. The western area of Serbia is covered in forests. It is known for its fruit production.



Serbia has attracted foreigners from the East and the West for many centuries. These historical encounters can be seen in architecture, culture, daily life, cuisine, and traditions. In recent years, a strong focus on innovation, creative industries, and the development of the IT sector put Serbia on the map of rising European economies.



Serbia strives to preserve its diversity and culture by fostering an atmosphere of community and hospitality.

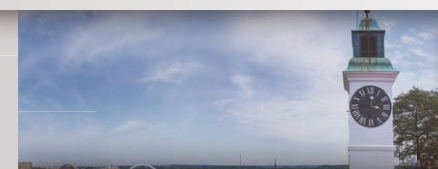
...cities in Serbia

Belgrade

Serbia's capital – the White City – is located at the confluence of the Danube and Sava rivers. Conveniently situated on the crossroads of main Balkan routes, the city has seen many who tried to conquer it throughout history. However, Belgrade conquers its visitors with its unique spirit and charm.

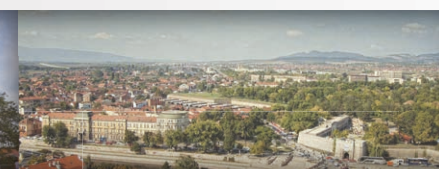


Novi Sad



The city of Novi Sad is the administrative centre of the northern province of Vojvodina and is located 90 kilometers northwest of the capital. It is internationally recognised as a host of one of the best music festivals in the world – Exit. It was also the 2019 European Youth Capital. Novi Sad was the European Capital of Culture in 2022.

Niš



Globally known as the birthplace of one of the most eminent Roman emperors – Constantine the Great, the city of Niš is one of the oldest in the Balkans. Located in the southern part of Serbia, Niš is a large university centre and the administrative centre of the Nišava district.

Kragujevac



The very first capital of modern Serbia, the city of Kragujevac is home to one of the first democratic constitutions in the world that was adopted in the early 19th century. It is also a well-known university centre and the fourth largest city in the Republic of Serbia.

The beauty of Serbia can also be appreciated in its many small towns. Sremski Karlovci is one of them. The town is located in the province of Vojvodina and has a long scholarly tradition. Some of the first schools in the Serbian language were founded there. Furthermore, a university centre for international students will be established in Sremski Karlovci.



Useful information

TRAVELLING IN/TO SERBIA



You can reach Serbia by air, train, car or bus, depending on where you are located.



- Two airports: Nikola Tesla Belgrade (BEG) and Constantine the Great Niš (INI).
- Bus stations in every city/town: Buses are the most reliable means of getting around the country
- Train stations in larger and smaller cities: Traveling by train is usually more budget-friendly; however, trains are not reliable as buses.
- Good highway networks: Serbia is on the Pan-European Corridor 10, the shortest route between Central/Western and Southern Europe. You can easily get around by car. Please make sure that your vehicle is insured and registered and that your driver's license is up to date.



CURRENCY

- The official currency of Serbia is the Serbian dinar (abbreviated as RSD). You can get around 117.21 dinars for 1 euro (May 2025).
- Cash and debit/credit cards are widely accepted. Most ATMs are available 24/7. Banks also offer currency exchange services, but almost always at less favourable exchange rates than official exchange offices.



HEALTH EMERGENCY

- The Emergency Service is available around the clock and can be reached by dialing 194. You are required to have health insurance during your stay in Serbia.



EXPERIENCE...

SPORTS AND RECREATION IN SERBIA

Serbia is a country of athletes. The most popular sports in Serbia are football, basketball, water polo, tennis, volleyball etc. A variety of sporting events are organised throughout the year all around Serbia. People also frequently watch matches on big screens in cafes or restaurants, especially during international sporting competitions, such as the World Cup or the Olympics.

HERE ARE SOME WAYS TO UNWIND AND HAVE FUN AFTER A LONG DAY AT THE UNIVERSITY

Join a sports or recreation club – You can become a member of a local sports club and practice your desired sport a few times a week. Monthly membership goes from 25 EUR to 50 EUR, depending on the sport and equipment needed. You can usually ask for one free training session to make sure you want to join the club.

Join a gym – Gyms, especially in larger cities, are numerous and easily accessible. Sign up for monthly membership and exercise at your own pace or receive help from a professional trainer.

Book a walking tour or go for a hike – Sign up for walking or hiking tours and explore stunning Serbian landscapes. If you want to discover Serbian cities, there are free walking tours that you can join.

HAVE A FREE EVENING? GO OUT!

There is always something going on, especially in the larger university cities. Big shopping malls are open until 10 PM Monday through Sunday. Most restaurants, bars and cafes usually work until midnight on weekdays and until 1 or 2 AM on weekends. "Splavovi" – floating river clubs – and regular clubs are open until early morning. Serbia is a safe country, so you can always enjoy a relaxing walk with friends after long study hours. There are grocery stores and bakeries that work around the clock, so you can also have a late-night snack while wandering around.

...having fun in Serbia

FESTIVALS AND CONCERTS

Serbia is a country of music lovers and hosts many live concerts and festivals every year. Larger cities have glorious music venues ideal for major summer shows and festivals, such as EXIT. Smaller towns also host popular regional festivals and musicians.

Most popular festivals	What?	When?	Where?
Exit	electro/pop-rock	July	Novi Sad
Nišville	jazz	August	Niš
Guča brass	bands/ethno	August	Guča village
Arsenal Fest	R'n'R/D'n'B	June	Kragujevac
Guitar Art Festival	classical guitar	March	Belgrade

HAVE A FREE WEEKEND? ORGANISE A TRIP!

Sleep in a real castle, take a selfie from one of the fortresses by the Danube river, walk the path of Roman emperors, experience history and religion by visiting beautiful monasteries from the middle ages or admire the power of nature in caves, by waterfalls or above canyons. You can also visit different fairs, food festivals or cultural events. Some travel agencies and organisations offer very affordable visits to natural and historic sites or cultural events around Serbia.



HEY THERE, STUDY IN SERBIA!

What are the most common phrases in Serbian?



Hello/Hi – Zdravo/Ćao
Yes – Da
No – Ne
Thank you – Hvala
Please – Molim

Good morning/afternoon/evening
– Dobro jutro / Dobar dan / Dobro veče

I do not speak Serbian, just English
– Ne govorim srpski, samo engleski

I am not interested in degree studies. Are there any options for a short study period?



If you would like to come to Serbia for a shorter period, there are short-term exchanges, summer schools and academic conferences. You can find more about these events on the websites of institutions organising them or on the Study in Serbia website: studyinserbia.rs.

Is Serbia a safe country to live in?



Yes, it is. It is perfectly safe to live in Serbia. According to the Global Peace Index rankings for 2022, Serbia is perceived to be safer than, for example, France. People from all over the world are welcome to come.

We have some questions for you

Can I work in Serbia while studying?



Foreign students can work up to 20 hours per week during term time. Before working, they need to obtain a work permit. Work permits are issued by the National Employment Service. For more information, please consult the EURAXESS webpage – <https://www.euraxess.rs/>.

Are there scholarships for foreign students?



There are student exchange programmes for short-term mobilities (Erasmus+ and CEEPUS). In addition, some scholarships may be available through bilateral agreements between Serbia and other countries. For more information on scholarship opportunities, please visit:

Are there many foreign students in Serbia?



Serbia has a long tradition of hosting international students, especially from Asia, Africa and Europe. Several thousand international students from over 110 countries study in Serbia.

The Ministry of Education is dedicated to improving study opportunities for international students. These plans include an initiative to develop a modern centre for international students in Sremski Karlovci, a small town in northern Serbia with a long scholarly tradition.

EXPERIENCE...

"Studiraj u Srbiji" project is an initiative of the Ministry of Education that aims to promote higher education in Serbia and improve services for international students. Visit prosveta.gov.rs/ for information about the education system in Serbia.



Republic Of Serbia
MINISTRY OF EDUCATION

Study in Serbia is a database of learning opportunities in Serbia that can help you:

- find accredited study programmes at all levels of studies taught in English or other foreign languages;
- browse all accredited educational institutions in Serbia and get in contact with them;
- learn about scholarship opportunities;
- get general practical information for incoming students.

Serbia Creates is a national platform whose mission is to empower and connect talents, by promoting knowledge, excellence and creativity. The platform's goal is to globally promote Serbia's export potential in the field of creative industries, innovation, and knowledge-based economy. It provides support to local artists and creatives in gaining international recognition, promoting the highest contemporary values of creativity, innovation, authenticity, knowledge, and talent.

Driven by the belief that everything begins with a single idea and talented individual, Serbia Creates aims to build a strong national brand that relies on internationally acclaimed talents whose achievements, innovation, and creative ideas continue to inspire. National platform Serbia Creates is part of a wider initiative led by the President of the Parliament of Serbia Ana Brnabic to support growth of the innovative and creative ecosystem, in close cooperation with artists, scientist, innovators and the creative sector in general.

**SERBIA
CREATES
TALENT**



...support before and during your studies

The Info Centre for international students is a one-stop shop for information on studying and living in Serbia. The Info Centre is located in downtown Belgrade (39 Terazije Street) and open to the public Monday through Friday from 9 AM to 5 PM.

The Info Centre provides general information to international students studying in Serbia and organises presentations, seminars, workshops and similar events. Furthermore, a library with resources, publications and information materials in Serbian and English is also available on-site.

If you have any questions, send an email to the Info Centre team at studyinserbia@tempus.ac.rs.



Impressum

Online publication: Study in Serbia 2025
Published by: Foundation Tempus

Design and layout: Foundation Tempus
Photos and illustrations:
Foundation Tempus, Deposit Photos,
Stock Unlimited



Ministry of Education

<https://prosveta.gov.rs/>

for information about the Serbian education system
and the internationalisation project "Studiraj u
Srbiji"



Republic Of Serbia
MINISTRY OF EDUCATION

Foundation Tempus

www.StudyInSerbia.rs

to discover learning opportunities in Serbia,
search the database Study in Serbia,
contact Study in Serbia at
studyinserbia@tempus.ac.rs
or visit Info Centre at
Terazije 39/1, Belgrade, Serbia

