



REPUBLIC OF SERBIA
MINISTRY OF EDUCATION, SCIENCE AND
TECHNOLOGICAL DEVELOPMENT

Ministry of Education, Science and Technological Development

www.mpn.gov.rs
for information about the Serbian education
system and the internationalisation project
"Studiraj u Srbiji", contact
studirajusrbiji@mpn.gov.rs



Foundation Tempus

www.StudyInSerbia.rs
to discover learning opportunities, search the
database Study in Serbia contact
StudyInSerbia@tempus.ac.rs
or visit
Info Centre
Terazije 39/I
Belgrade, Serbia



YOUR GUIDE TO HIGHER
EDUCATION IN
SERBIA

DISCOVER
LEARN
EXPERIENCE

**WEL
COME!**

Discover

Learn

Experience

Discover...

...Serbia

Welcome to Serbia! The Republic of Serbia is a European country located at the heart of the Balkan Peninsula, at the crossroads of Central and Southeast Europe. Situated at the central Balkan routes, Serbia has inherited considerable cultural wealth and become a unique mix of different influences and traditions. Choose Serbia as your study destination and discover its diverse and spectacular landscapes and experience the well-known hospitality of the Serbian people!



HIGH-QUALITY EDUCATION AT AFFORDABLE PRICES

Serbia provides a world-leading education in several study areas and our universities feature high on different academic ranking lists. High-quality education, combined with affordably priced tuition fees makes Serbia a top study destination in Europe. Discover more about the internationally recognised quality of Serbian higher education institutions on pages 9 and 10.

EARN A DEGREE THAT WILL ADVANCE YOUR FUTURE CAREER

There are over 170 study programmes at all levels (bachelor, master and PhD) entirely or partially taught in English. All study programmes are of high quality and accredited by the **National Entity for Accreditation and Quality Assurance in Higher Education in Serbia**. Enrol in a university or college in Serbia and earn a degree that will advance your future career!

AFFORDABLE LIVING COSTS

Average monthly living expenses in Serbia range between 350 and 650 EUR (tuition fees not included), depending on the housing type and location. These amounts are lower than in other European countries and should cover food, accommodation, utilities, transportation and other expenses.

DISCOVER SERBIAN CULTURE AND HOSPITABLE PEOPLE

Perfectly safe and welcoming, Serbia is one of the emerging travel destinations in Europe! Serbs are known as friendly and hospitable people who will make your stay very enjoyable. Conveniently situated at the crossroads of Central and Southeast Europe, Serbia has connected the East and the West for centuries. Due to its rich cultural and historical heritage, it has become a diverse, multicultural community. Discover Serbia's uniqueness and experience its rich history and culture.

VIBRANT SOCIAL AND STUDENT LIFE

Something is always going on in Serbian cities, especially in the university centres. Belgrade will offer you an amazing student life full of fun activities such as music and film festivals, food fairs and spectacular nightlife! Other university cities, such as Novi Sad, Niš and Kragujevac, will welcome you with their charming atmosphere and friendly, warm people!



Types of studies:

Academic and applied

Serbia has been a full member of the European Higher Education Area (EHEA):

Serbia joined the Bologna Process in 2003 and started implementing the European Credit Transfer and Accumulation System (ECTS). ECTS allows credits taken at one higher education institution to be counted towards a qualification studied for at another. Each study programme is defined through the number of ECTS.

Academic and applied studies:

- Bachelor studies range from 180 ECTS credits (3 years) to 240 ECTS credits (4 years);
- Master studies range from 60 ECTS credits (1 year) to 120 ECTS credits (2 years);
- PhD studies last for 3 years and carry 180 ECTS credits;
- Specialist studies last for a year and carry 60 ECTS credits;
- Integrated studies (Bachelor + Master) – last for 5 years and carry 300 ECTS credits (pharmacy/dentistry) or 6 years and carry 350 ECTS credits (medical sciences).

Accreditation:

Both an institution and a study programme must be accredited by the national accreditation body.

Academic year:

Starts in October, lasts for two semesters, 60 ECTS credits per annum, usually 5 exam periods.

Recognition of degrees:

To enrol in Bachelor/Integrated studies – contact the **ENIC-NARIC Centre** for recognition of your high-school diploma. To enrol in Master/PhD studies – contact the relevant university.

Tuition fees:

Usually range from 1000 to 7000 EUR per year, depending on a programme.

Living costs:

Comparatively lower than in many other European countries:
Accommodation – 60–450 EUR/month
Food – around 150–200 EUR/month
Public transportation – around 10–15 EUR/month

Institutions:

Universities, faculties/academies of arts (members of universities), Academy of applied studies, colleges (members of academies).

Number of students:

250000 students

Number of foreign students:

10000+ students

INTERNATIONALLY RECOGNISED QUALITY OF HIGHER EDUCATION IN SERBIA

The most prestigious university rankings in the world feature Serbian universities. On the prestigious 2021 Shanghai Ranking, the University of Belgrade was ranked between the 501st and 600th (shanghairanking.com) and has kept its leading position in the country and the region.

The University Ranking by Academic Performance (urapcenter.org) rated 2500 world's best universities based on academic quality. The most recent list for 2021/2022 included four Serbian universities. The University of Belgrade is in the top 300 and the University of Novi Sad is among 900 best world universities. The Universities of Niš and Kragujevac are among 1500 world's best higher education institutions.

The CWTS Leiden Ranking 2021 (leidenranking.com) also offers important insights into the scientific performance of over 1200 leading universities worldwide. They rated the University of Belgrade as the 52nd best university in Europe and the 193rd world university. Being in the 228th place, the University of Novi Sad is another Serbian university highly ranked in Europe.

EXCELLENCE IN SUBJECT FIELDS

The University of Belgrade is in the top 75 universities in the world in Food Science and Technology according to the 2021 subject rankings published by the Shanghai Ranking Consultancy. In the same study field, the University of Novi Sad ended up between the 201st and 300th place on the list. Moreover, the University of Belgrade is ranked among 300 best world universities across several study fields of Medical and Life Sciences. In addition to the University of Belgrade, the University of Kragujevac is in the top 300 world universities in Clinical Medicine.

URAP's subject rankings put the University of Belgrade in the 76th place of the world's best universities in Food Engineering. The University of Novi Sad is in the top 250 in the same field. Moreover, the University of Belgrade ranked among 200 best universities in many other study areas, such as Metallurgical Engineering, Pharmacology, Dentistry, Zoology, Transportation Science, and Technology.



Tuition fees

Tuition fees in Serbia are paid annually and usually range from 1000 EUR to 7000 EUR. Tuition fees cover 60 ECTS credits per annum and include access to university/college facilities such as computer labs, libraries and other study services. Books and study materials are usually not included. However, their price rarely exceeds 100–250 EUR per year.

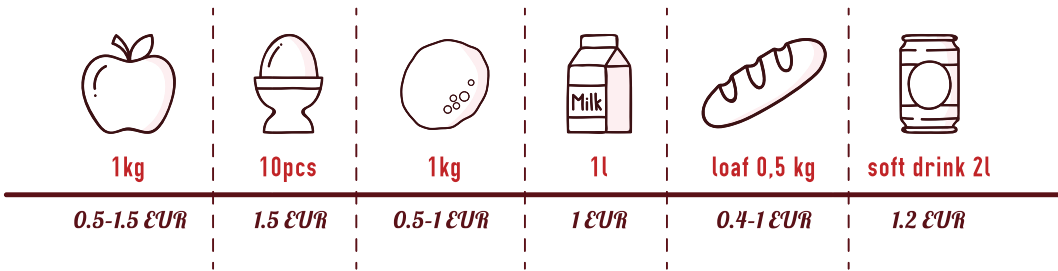
Cost of accommodation

Student dormitories: Public dormitories in Serbia are available for the holders of the Serbian government scholarship and the international students coming on an exchange within the CEEPUS programme.

Housing: The cost of privately rented accommodation depends on the location, size, position and state of the rented property. Sharing a flat with other students in a small town can cost 75 EUR or more per person, utilities excluded. If you want to rent a whole flat in a central location in Belgrade for yourself, that can cost up to 500 EUR per month, plus 150 EUR for utilities.

Food expenses

Student canteens in Serbia offer meals at discounted prices – around 1,5–2,5 EUR per meal. These canteens are open to all students who own a student card. Groceries are cheaper in supermarkets than in smaller local shops and fruits and vegetables are the most affordable (and of better quality) when purchased in the farmers’ markets.






Travel costs

A monthly pass with a student discount is around 10 EUR or less. The pass is valid for an unlimited number of journeys on all means of public transport.

Cost of leisure activities

- Coffee or a soft drink in a café ~ 1–2 EUR;
- A cinema ticket ~ 3–7 EUR;
- A night out ~ 15–20 EUR;
- A one-day excursion (to a historical or natural landmark, a shopping tour, etc.) ~ 20 EUR.

Estimated costs per month (in EUR)

	Smaller town (up to 100000 inhabitants)		Big city (more than 100000 inhabitants)		The capital (Belgrade)	
	min	max	min	max	min	max
 Tuition fee	80	400	100	500	100	600
 Accommodation (incl. utilities)	Shared flat 110	Private flat 150	Shared flat 120	Private flat 250	Shared flat 150	Private flat 500–600
 Food, travel and living expenses	250		350		400	
TOTAL (incl. tuition)	440	800	570	1100	650	1500–1600

Learn...

Where to study

Higher education institutions are located all over the country, but the biggest university centres with the largest student population are Belgrade (the capital), Novi Sad, Niš and Kragujevac.

In which language to study

The main language of instruction is Serbian, however, there are also study programmes entirely or partially taught in English and other foreign languages.

- Degree or exchange studies in English: You can find the list of English-taught study programmes in this publication or by visiting studyinserbia.rs.
- Study in Serbian: You can enroll in a Serbian-taught degree programme if you speak Serbian. If you would like to learn it, visit studyinserbia.rs for more information on how to do that.

When to apply

Although application deadlines vary, most are organised in June (for undergraduate studies) and October (for Master and PhD studies). We understand that sometimes it can be challenging to navigate your application process. To make sure not to miss any deadlines, you can follow our 12-step guide to studying in Serbia on pages 35–38.

What to study

With more than 170 full-degree study programmes at all levels entirely or partially taught in English and student exchange programmes, Serbia offers many opportunities for prospective international candidates.

How much it costs

The cost of studying and living in Serbia is considerably lower than in other European countries:

1. Tuition fees range from less than 1000 EUR to up to 10000 EUR, and average living costs (accommodation, food and other expenses) are around 450–600 EUR;
2. Fun and leisure activities are also very affordable.

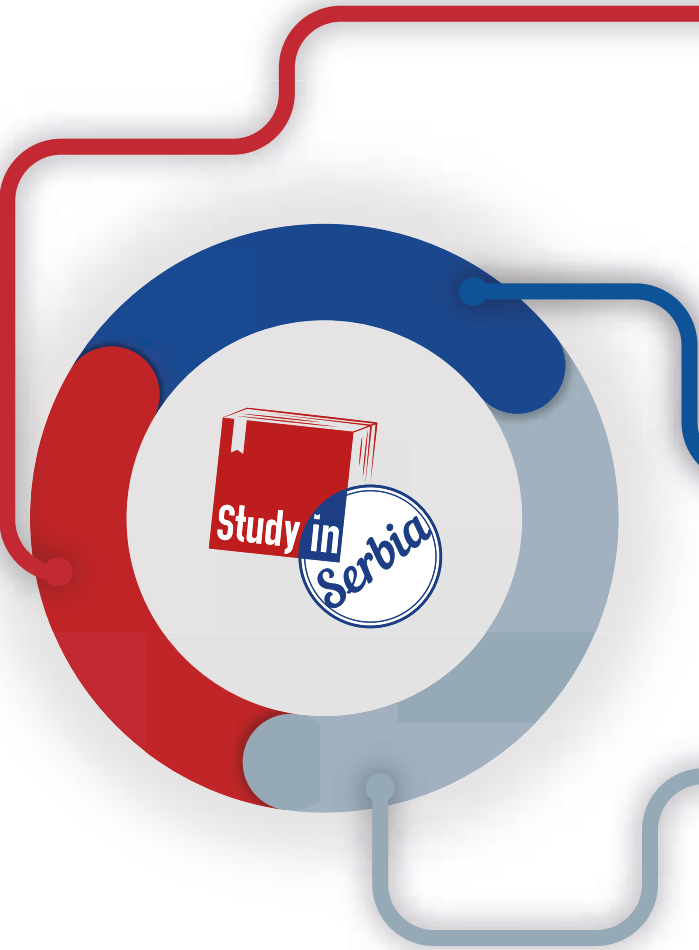
How to start

Just turn the page and start exploring!

Learn about... *...programmes and institutions*

The following pages feature a list of study programmes that are entirely or partially taught in English and accredited by the National Entity for Accreditation and Quality Assurance in Higher Education in Serbia. Please be advised to double-check the information provided on the list with a relevant higher education institution. The contact details for each programme are listed below.

The programmes are presented by study fields and divided into the following three categories:



PROGRAMMES IN RED

ARE ENTIRELY TAUGHT IN ENGLISH. HIGHER EDUCATION INSTITUTIONS OFFERING THOSE PROGRAMMES HAVE A LONG TRADITION OF WELCOMING INTERNATIONAL STUDENTS.

PROGRAMMES IN BLUE

ARE FULLY TAUGHT IN ENGLISH.

PROGRAMMES IN GREY

ARE PARTIALLY TAUGHT IN ENGLISH. SOME CLASSES MAY BE OFFERED IN SERBIAN; HOWEVER, ADDITIONAL SUPPORT (SUCH AS INDIVIDUAL SESSIONS AND CONSULTATIONS WITH TEACHING STAFF) WILL BE PROVIDED TO INTERNATIONAL STUDENTS.

UNDERGRADUATE DEGREES – BACHELOR AND INTEGRATED PROGRAMMES (1st Degree Programmes)

Duration of the programme (total no. of years)	STUDY PROGRAMME	Tuition fee per academic year ² (in EUR)	Institution (University / Faculty)
--	-----------------	---	------------------------------------

Medical Sciences

6	MEDICINE	7000	University of Belgrade Faculty of Medicine studiesinenglish.med.bg.ac.rs biljana.buljugic@med.bg.ac.rs bojana.stankovic@med.bg.ac.rs milena.mihailovic@med.bg.ac.rs
6	DENTISTRY	5000	University of Belgrade Faculty of Dentistry stomf.bg.ac.rs stomfak@rcub.bg.ac.rs
6	DENTAL MEDICINE	6500	University of Novi Sad Faculty of Medicine mf.uns.ac.rs/En/index_Eng.php medns.studiesinenglish@mf.uns.ac.rs
6	MEDICINE	6500	
6	MEDICINE	5500	University of Niš Faculty of Medicine studmednis.com medni.eng@gmail.com
5	PHARMACY	3500	University of Belgrade Faculty of Pharmacy pharmacy.bg.ac.rs/en milica.benedik@pharmacy.bg.ac.rs
5	PHARMACY	3000	University of Kragujevac Faculty of Medical Sciences medf.kg.ac.rs/en/phias.php phias@medf.kg.ac.rs nbarudzic@hotmail.com

¹ Undergraduate and postgraduate academic studies are integrated into one cycle of studies. Integrated study programmes last for 5 or 6 years and comprise 300 or 360 ECTS credits

² Tuition fees may differ from the ones presented in the catalogue. Prospective candidates are advised to double-check the fees with a relevant higher education institution. Contact information for each study programme is listed in the table.

Duration of the programme (total no. of years)	STUDY PROGRAMME	Tuition fee per academic year (in EUR)	Institution (University / Faculty)
5	PHARMACY	4500	Business Academy University Faculty of Pharmacy 🌐 faculty-pharmacy.com ✉ office@faculty-pharmacy.com
5	PHARMACY — MEDICAL BIOCHEMISTRY	4500	

Business, Economics, Administration and Law

4	ECONOMICS AND FINANCE	1500+2850	University of Belgrade Faculty of Economics and University of London, LSE 🌐 ekof.bg.ac.rs/?lang=en ✉ international.office@ekof.bg.ac.rs
4	BUSINESS AND MANAGEMENT	1500+2850	
3	BUSINESS ECONOMICS AND ENTREPRENEURSHIP DLS (Distance Learning Studies)	2000	Faculty of Business Economics and Entrepreneurship 🌐 vspep.edu.rs/en/study-programs/business-economy-and-entrepreneurship ✉ erasmus.office@vspep.edu.rs a.tosovicstevanovic@vspep.edu.rs

Information and Communication Technology

4	SOFTWARE ENGINEERING	3000	University of Belgrade School of Electrical Engineering 🌐 etf.bg.ac.rs/en ✉ stud_sluzba@etf.bg.ac.rs
4	COMPUTING AND CONTROL ENGINEERING	3000	University of Novi Sad Faculty of Technical Sciences 🌐 ftn.uns.ac.rs/n1386094394/faculty-of-technical-sciences ✉ iro.ftn@uns.ac.rs
4	INFORMATION ENGINEERING	3000	
4	SOFTWARE ENGINEERING AND INFORMATION TECHNOLOGY	3000	
4	INFORMATION SYSTEMS ENGINEERING	3000	

Duration of the programme (total no. of years)	STUDY PROGRAMME	Tuition fee per academic year (in EUR)	Institution (University / Faculty)
4	ELECTRICAL ENGINEERING AND COMPUTING	2000	University of Niš Faculty of Electronic Engineering 🌐 elfak.ni.ac.rs/en ✉ efinfo@elfak.ni.ac.rs

Engineering, Manufacturing and Construction

5	INTEGRATED ACADEMIC STUDIES – ARCHITECTURE (IASA)	4000	University of Belgrade Faculty of Architecture and Sapienza Università di Roma, Facoltà di Architettura 🌐 arh.bg.ac.rs/en/studies/integrated-single-cycle-5-year-studies-in-architecture/?pismo=lat ✉ duke@arh.bg.ac.rs
3	MECHANICAL ENGINEERING	1800	University of Belgrade Faculty of Mechanical Engineering 🌐 mas.bg.ac.rs/eng/start ✉ se_nast@mas.bg.ac.rs
4	BIOMEDICAL ENGINEERING	3000	University of Novi Sad Faculty of Technical Sciences 🌐 ftn.uns.ac.rs/n1386094394/faculty-of-technical-sciences ✉ iro.ftn@uns.ac.rs
4	CLEAN ENERGY TECHNOLOGIES	3000	
4	DISASTER RISK MANAGEMENT AND FIRE SAFETY	3000	
4	ENERGY AND PROCESS ENGINEERING	3000	
4	ENGINEERING ANIMATION	3000	
4	ENGINEERING MANAGEMENT	3000	
4	ENVIRONMENTAL ENGINEERING	3000	
4	GEODESY AND GEOINFORMATICS	3000	
4	GRAPHIC ENGINEERING AND DESIGN	3000	

Duration of the programme (total no. of years)	STUDY PROGRAMME	Tuition fee per academic year (in EUR)	Institution (University / Faculty)
4	INDUSTRIAL ENGINEERING	3000	University of Novi Sad Faculty of Technical Sciences ftn.uns.ac.rs/n1386094394/faculty-of-technical-sciences iro.ftn@uns.ac.rs
4	MEASUREMENT AND CONTROL ENGINEERING	3000	
4	PRODUCTION ENGINEERING	3000	
4	SCENE ARCHITECTURE, TECHNIQUE AND DESIGN	3000	
4	TECHNICAL MECHANICS AND TECHNICAL DESIGN	3000	
4	ARCHITECTURE	3000	
4	POWER, ELECTRONICS AND TELECOMMUNICATION ENGINEERING	3000	
4	POWER SOFTWARE ENGINEERING	3000	
4	CIVIL ENGINEERING	3000	
4	MECHATRONICS	3000	
4	MECHANIZATION AND CONSTRUCTION ENGINEERING	3000	
4	TRAFFIC AND TRANSPORT ENGINEERING	3000	
4	POSTAL TRAFFIC AND TELECOMMUNICATIONS	3000	
4	ELECTRICAL AND COMPUTER ENGINEERING	2000	University of Belgrade School of Electrical Engineering etf.bg.ac.rs/en stud_sluzba@etf.bg.ac.rs

POSTGRADUATE DEGREES – MASTER AND SPECIALIST PROGRAMMES (2nd Degree Programmes) Master Programmes

Duration of the programme (total no. of years)	STUDY PROGRAMME	Tuition fee per academic year (in EUR)	Institution (University / Faculty)
---	-----------------	---	---------------------------------------

Medical Sciences

1	PUBLIC HEALTH	2900	University of Belgrade Faculty of Medicine med.bg.ac.rs/?page_id=12212 nenad.pavlovic@med.bg.ac.rs
1	BIOETHICS	2000	

Business, Economics, Administration and Law

1 or 2	EUROPEAN INTEGRATION (MEI)	2100	University of Belgrade Faculty of Law ius.bg.ac.rs/master-studies/ ivana.rodic@ius.bg.ac.rs ljiljana.maric@ius.bg.ac.rs
1	PUBLIC PROCUREMENT MANAGEMENT	7200	

1	EUROPEAN POLITICS AND CRISIS MANAGEMENT	2400	University of Belgrade bg.ac.rs bg.ac.rs/en/education/enrollment.php studijepriuniverzitetu@rect.bg.ac.rs
---	---	------	--

1	INTERNATIONAL MASTER IN QUANTITATIVE FINANCE – IMQF	4000	University of Belgrade Faculty of Economics ekof.bg.ac.rs/studies/master/master-studije-na-stranom-jeziku/international-master-in-quantitative-finance/?lang=en international.master@ekof.bg.ac.rs
---	---	------	--

Duration of the programme (total no. of years)	STUDY PROGRAMME	Tuition fee per academic year (in EUR)	Institution (University / Faculty)
1	MASTER IN APPLIED ECONOMICS	4000	University of Belgrade Faculty of Economics 🌐 ekof.bg.ac.rs/studies/master/master-studije-na-stranom-jeziku/international-master-in-applied-economics/?lang=en ✉ international.master@ekof.bg.ac.rs
1 or 2	MASTER IN TAXATION	4000	University of Belgrade Faculty of Economics and Faculty of Law 🌐 ekof.bg.ac.rs/studies/master/master-studije-na-stranom-jeziku/international-master-in-taxation/?lang=en ✉ international.master@ekof.bg.ac.rs
1 or 2	BUSINESS INFORMATICS	4000	University of Belgrade Faculty of Economics 🌐 ekof.bg.ac.rs/studies/master/master-studije-na-stranom-jeziku/international-master-in-business-informatics/?lang=en ✉ international.master@ekof.bg.ac.rs
1	REGIONAL DEVELOPMENT PLANNING AND MANAGEMENT	4500	University of Novi Sad Faculty of Technical Sciences 🌐 ftn.uns.ac.rs/n1386094394/faculty-of-technical-sciences ✉ iro.ftn@uns.ac.rs
2	BUSINESS ECONOMICS AND ENTREPRENEURSHIP DLS	2600	Faculty of Business Economics and Entrepreneurship 🌐 vspep.edu.rs/en/study-programs/business-economics-and-entrepreneurship ✉ erasmus.office@vspep.edu.rs a.tosovicstevanovic@vspep.edu.rs
1,5	INTERNATIONAL BUSINESS AND MANAGEMENT	5500	University of Belgrade Faculty of Organizational Sciences and Middlesex University Business School, London, UK 🌐 fon.bg.ac.rs ✉ ibm@fon.bg.ac.rs international@fon.bg.ac.rs.

Duration of the programme (total no. of years)	STUDY PROGRAMME	Tuition fee per academic year (in EUR)	Institution (University / Faculty)
2	ADVANCED DATA ANALYTICS IN BUSINESS	Please check with the institution.	Univesity of Novi Sad Faculty of Economics 🌐 ef.uns.ac.rs/ofakultetu/studijski-programi/mas-advanced-data-analytics-in-business.php www.ada.ac.rs/sp-uns/ ✉ mirko.savic@ef.uns.ac.rs

Arts, Humanities and Sports

1	UNESCO CHAIR IN CULTURAL POLICY AND MANAGEMENT	2000	University of Arts in Belgrade 🌐 arts.bg.ac.rs/en ✉ coordinator@arts.bg.ac.rs iro@arts.bg.ac.rs
1	CULTURAL TOURISM AND CULTURAL HERITAGE MANAGEMENT	2000	University of Novi Sad Faculty of Sciences 🌐 pmf.uns.ac.rs/en/master-in-cultural-tourism-and-cultural-heritage-management-2021 ✉ tatjana_pivac@yahoo.com
1	ENGLISH LANGUAGE AND LITERATURE	660	University of Niš Faculty of Philosophy 🌐 intl.filfak.ni.ac.rs/en/study-programmes-and-course-catalogue/master-academic-studies ✉ international@filfak.ni.ac.rs
1	PEACE, SECURITY AND DEVELOPMENT	1500	University of Belgrade Faculty of Political Sciences 🌐 fpn.bg.ac.rs/medjunarodna-saradnja/ma-in-peace-security-and-development ✉ nemanja.dzuverovic@fpn.bg.ac.rs filip.edjus@fpn.bg.ac.rs
1	SOCIETY, STATE, TRANSITION	6375	University of Belgrade Faculty of Philosophy 🌐 f.bg.ac.rs/en2 ✉ hdajc@f.bg.ac.rs iro@f.bg.ac.rs

Duration of the programme (total no. of years)	STUDY PROGRAMME	Tuition fee per academic year (in EUR)	Institution (University / Faculty)
---	-----------------	---	---------------------------------------

Natural Sciences, Mathematics and Statistics

1,5	REPRODUCTIVE BIOLOGY	3500	University of Novi Sad Faculty of Sciences pmf.uns.ac.rs/en/studies/study-programs/reproductive-biology-2019/ radmila.kovacevic@dbe.uns.ac.rs
2	APPLIED MATHEMATICS: DATA SCIENCE	1000	University of Novi Sad Faculty of Sciences pmf.uns.ac.rs/en/studies/study-programs/ dusan.jakovetic@gmail.com

Information and Communication Technology

1	SOCIAL SCIENCES AND COMPUTING	2400	University of Belgrade bg.ac.rs/en/education/interdisciplinary/computing.php devedzic@fon.rs devedzic.vladan@fon.bg.ac.rs
1,5	INFORMATION TECHNOLOGY	3000	University of Kragujevac kg.ac.rs/as_unikg_it.php kg.ac.rs/as_unikg_rki.php nenad.pavlovic@med.bg.ac.rs
1,5	COMPUTER GAMES DEVELOPMENT	3000	
1	COMPUTING AND CONTROL ENGINEERING	4500	University of Novi Sad Faculty of Technical Sciences ftn.uns.ac.rs/n1386094394/faculty-of-technical-sciences iro.ftn@uns.ac.rs
1	DIGITAL TECHNIQUES, DESIGN AND PRODUCTION	4500	
1	INFORMATION AND ANALYTICS ENGINEERING	4500	
1	INFORMATION ENGINEERING	4500	
1	INFORMATION SYSTEMS ENGINEERING	4500	
1	SOFTWARE ENGINEERING AND INFORMATION TECHNOLOGY	4500	

Duration of the programme (total no. of years)	STUDY PROGRAMME	Tuition fee per academic year (in EUR)	Institution (University / Faculty)
---	-----------------	---	---------------------------------------

2	ARTIFICIAL INTELLIGENCE	1000	University of Novi Sad Faculty of Sciences pmf.uns.ac.rs/en/studies/study-programs/msc-artificial-intelligence-2022 radacha@dmf.uns.ac.rs
1	COMPUTING AND INFORMATICS	2000	University of Niš Faculty of Electronic Engineering elfak.ni.ac.rs/en efinfo@elfak.ni.ac.rs
1	CONTROL SYSTEMS	2000	
1	COMMUNICATION AND INFORMATION TECHNOLOGIES	2000	

Engineering, Manufacturing and Construction

1	ELECTRICAL AND COMPUTER ENGINEERING	9000	University of Belgrade School of Electrical Engineering etf.bg.ac.rs/en stud_sluzba@etf.bg.ac.rs
2	ARCHITECTURE	4000	University of Belgrade Faculty of Architecture arh.bg.ac.rs/en/studies/master-studies/?pismo=lat jelena.zivkovic@arh.bg.ac.rs
1	ARCHITECTURE	4500	University of Novi Sad Faculty of Technical Sciences ftn.uns.ac.rs/n1386094394/faculty-of-technical-sciences iro.ftn@uns.ac.rs
1	BIOMEDICAL ENGINEERING	4500	
1	CIVIL ENGINEERING	4500	
1	CLEAN ENERGY TECHNOLOGIES	4500	
1	DISASTER RISK MANAGEMENT AND FIRE SAFETY	4500	
1	ENERGY AND PROCESS ENGINEERING	4500	

Duration of the programme (total no. of years)	STUDY PROGRAMME	Tuition fee per academic year (in EUR)	Institution (University / Faculty)
---	-----------------	---	---------------------------------------

1	ENGINEERING ANIMATION	4500
1	ENGINEERING MANAGEMENT	4500
1	ENVIRONMENTAL ENGINEERING	4500
1	GEODESY AND GEOINFORMATICS	4500
1	INDUSTRIAL ENGINEERING	4500
1	MEASUREMENT AND CONTROL ENGINEERING	4500
1	MECHATRONICS	4500
1	PRODUCTION ENGINEERING	4500
1	POWER, ELECTRONIC AND TELECOMMUNICATION ENGINEERING	4500
1	TECHNICAL MECHANICS AND TECHNICAL DESIGN	4500
2	WATER TREATMENT AND SAFETY ENGINEERING	4500
1	SCENE ARCHITECTURE AND DESIGN	4500
1	SCENE ARCHITECTURE AND TECHNIQUE	4500
1	POWER SOFTWARE ENGINEERING	4500
1	GRAPHIC ENGINEERING AND DESIGN	4500
1	MECHATRONICS	4500
1	MECHANISATION AND CONSTRUCTION ENGINEERING	4500
2	MATHEMATICS IN ENGINEERING	4500

University of Novi Sad
Faculty of Technical Sciences
ftn.uns.ac.rs/n1386094394/faculty-of-technical-sciences
iro.ftn@uns.ac.rs

Duration of the programme (total no. of years)	STUDY PROGRAMME	Tuition fee per academic year (in EUR)	Institution (University / Faculty)
---	-----------------	---	---------------------------------------

1	TRAFFIC AND TRANSPORT ENGINEERING	4500
1	POSTAL TRAFFIC AND TELECOMMUNICATIONS	4500
2	ENGINEERING MANAGEMENT MBA	4500

University of Novi Sad
Faculty of Technical Sciences
ftn.uns.ac.rs/n1386094394/faculty-of-technical-sciences
iro.ftn@uns.ac.rs

1	ELECTRICAL POWER ENGINEERING	2000
1	ELECTRONICS AND MICROSYSTEMS	2000

University of Niš
Faculty of Electronic Engineering
elfak.ni.ac.rs/en
efinfo@elfak.ni.ac.rs

1	ENVIRONMENTAL PROTECTION IN AGRICULTURE	2200
---	---	------

University of Belgrade
Faculty of Agriculture
agrif.bg.ac.rs/Fakultet/154
soljaca@agrif.bg.ac.rs

1	MECHANICAL ENGINEERING	2400
---	------------------------	------

University of Belgrade
Faculty of Mechanical Engineering
mas.bg.ac.rs/eng/start
mf@mas.bg.ac.rs

1	BIOENGINEERING	1800
---	----------------	------

University of Kragujevac
Faculty of Engineering
fink.rs/en/studies/master-academic-studies/msc-study-programmes/bioengineering
studentska.sluzba@fink.rs

1	BIOCHEMICAL ENGINEERING AND BIOTECHNOLOGY	4000
1	CHEMICAL ENGINEERING	4000
1	ENVIRONMENTAL ENGINEERING	4000
1	MATERIALS ENGINEERING	4000
1	METALLURGICAL ENGINEERING	4000
1	DIGITAL PROCESS ENGINEERING	4000

University of Belgrade
Faculty of Technology and Metallurgy
tmf.bg.ac.rs/en
studentska@tmf.bg.ac.rs

Duration of the programme (total no. of years)	STUDY PROGRAMME	Tuition fee per academic year (in EUR)	Institution (University / Faculty)
2	FORESTRY AND NATURAL RESOURCES MANAGEMENT	1450	University of Belgrade Faculty of Forestry 🌐 sfb.bg.ac.rs/en ✉ marko.perovic@sfb.bg.ac.rs
1	PETROLEUM ENGINEERING	3900	University of Belgrade Faculty of Mining and Geology 🌐 rgf.bg.ac.rs/eng/index.php ✉ prodekan.nastava@rgf.bg.ac.rs

Specialist Studies³

Medical Sciences

1	COSMETOLOGY	2000	University of Belgrade Faculty of Pharmacy 🌐 pharmacy.bg.ac.rs/en ✉ milica.benedik@pharmacy.bg.ac.rs
1.5	PHARMACEUTICAL CARE	2000	
1	PHARMACEUTICAL MANAGEMENT AND MARKETING	2000	

³ Specialist Academic Studies last for one year and carry 60 ECTS; students who have achieved at least 300 ECTS during previous studies are eligible to apply for those programmes.

PHD PROGRAMMES

(3rd Degree Programmes)

Duration of the programme (total no. of years)	STUDY PROGRAMME	Tuition fee per academic year (in EUR)	Institution (University / Faculty)
--	-----------------	--	------------------------------------

Medical Sciences

3	BASIC AND CLINICAL RESEARCH IN DENTISTRY	5000	University of Belgrade Faculty of Dentistry 🌐 stomf.bg.ac.rs/nastava/doktorske-studije/ ✉ ivana.radovic@gmail.com ✉ jasminka.tekic@stomf.bg.ac.rs
3	PHARMACEUTICAL SCIENCES	5000	University of Belgrade Faculty of Pharmacy 🌐 pharmacy.bg.ac.rs/en ✉ milica.benedik@pharmacy.bg.ac.rs

Arts, Humanities and Sports

3	PHYSICAL EDUCATION AND SPORTS	3000	University of Belgrade Faculty of Sports and Physical Education 🌐 dif.bg.ac.rs/en/studije-od-2021-22/doktorske-akademske-studije ✉ aleksandar.nedeljkovic@fsfv.bg.ac.rs
---	-------------------------------	------	---

Natural Sciences, Mathematics and Statistics

3	BIOLOGY	7200	University of Belgrade Faculty of Biology 🌐 bio.bg.ac.rs/ ✉ dekanat@bio.bg.ac.rs
3	ECOLOGY	7200	
3	MOLECULAR BIOLOGY	7200	

Duration of the programme (total no. of years)	STUDY PROGRAMME	Tuition fee per academic year (in EUR)	Institution (University / Faculty)
3	METEOROLOGY	4000	University of Belgrade Faculty of Physics ff.bg.ac.rs/Engleski/Doctoral/Doctoral.html sstevan@ff.bg.ac.rs mirjana@ff.bg.ac.rs
3	PHYSICS	4000	
3	DOCTORAL SCHOOL OF MATHEMATICS	2500	University of Novi Sad Faculty of Sciences pmf.uns.ac.rs/studije/studijski-programi/doktorska-skola-matematike-2016 stevan.pilipovic@dmi.uns.ac.rs
3	GEOGRAPHICAL SCIENCES	2500	University of Novi Sad Faculty of Sciences pmf.uns.ac.rs/en/studies/study-programs/phd-in-geosciences-geography milka.bubalo.zivkovic@dgt.uns.ac.rs
3	TOURISM	2500	University of Novi Sad Faculty of Sciences pmf.uns.ac.rs/en/studies/study-programs/phd-in-geosciences-tourism miroslav.vujicic@dgt.uns.ac.rs
3	BIOLOGY	5000	University of Novi Sad Faculty of Sciences pmf.uns.ac.rs/en/studies/study-programs/phd-in-biological-sciences lana.zoric@dbe.uns.ac.rs
3	ECOLOGY	3500	University of Novi Sad Faculty of Sciences pmf.uns.ac.rs/en/studies/study-programs/phd-in-ecological-sciences lana.zoric@dbe.uns.ac.rs
3	MOLECULAR BIOLOGY	5000	University of Novi Sad Faculty of Sciences pmf.uns.ac.rs/en/studies/study-programs lana.zoric@dbe.uns.ac.rs

Duration of the programme (total no. of years)	STUDY PROGRAMME	Tuition fee per academic year (in EUR)	Institution (University / Faculty)
3	PHD SCHOOL OF MATHEMATICS	800	University of Niš Faculty of Sciences and Mathematics operator.pmf.ni.ac.rs/doktorskaskola/doktorskaskola.html dragandjordjevic70@gmail.com

Information and Communication technology

3	INFORMATION SYSTEMS ENGINEERING	6000	University of Novi Sad Faculty of Technical Sciences ftn.uns.ac.rs/n1386094394/faculty-of-technical-sciences iro.ftn@uns.ac.rs
3	COMPUTING AND CONTROL ENGINEERING	6000	
3	ELECTRICAL ENGINEERING AND COMPUTING	3000	University of Niš Faculty of Electronic Engineering elfak.ni.ac.rs/en efinfo@elfak.ni.ac.rs

Engineering, Manufacturing and Construction

3	ELECTRICAL AND COMPUTER ENGINEERING	10000	University of Belgrade School of Electrical Engineering etf.bg.ac.rs/en stud_sluzba@etf.bg.ac.rs
3	COMPUTING AND CONTROL ENGINEERING	6000	University of Novi Sad Faculty of Technical Sciences ftn.uns.ac.rs/n1386094394/faculty-of-technical-sciences iro.ftn@uns.ac.rs
3	BIOMEDICAL ENGINEERING	6000	
3	MATHEMATICS IN ENGINEERING	6000	

Duration of the programme (total no. of years)	STUDY PROGRAMME	Tuition fee per academic year (in EUR)	Institution (University / Faculty)
3	TRAFFIC ENGINEERING	6000	University of Novi Sad Faculty of Technical Sciences ftn.uns.ac.rs/n1386094394/faculty-of-technical-sciences iro.ftn@uns.ac.rs
3	ENVIRONMENTAL ENGINEERING	6000	
3	SCENE DESIGN	6000	
3	ARCHITECTURE	6000	
3	CIVIL ENGINEERING	6000	
3	DISASTER RISK MANAGEMENT AND FIRE SAFETY	6000	
3	ENGINEERING ANIMATION	6000	
3	GEODESY AND GEOINFORMATICS	6000	
3	INDUSTRIAL ENGINEERING / ENGINEERING MANAGEMENT	6000	
3	GRAPHIC ENGINEERING AND DESIGN	6000	
3	MECHANICAL ENGINEERING	6000	
3	MECHATRONICS	6000	
3	POWER, ELECTRONIC AND TELECOMMUNICATION ENGINEERING	6000	
3	TECHNICAL MECHANICS AND TECHNICAL DESIGN	6000	
3	ARCHITECTURE	5000	University of Belgrade Faculty of Architecture arh.bg.ac.rs/en/studies/doctoral-studies-phd/?pismo=lat sandra@arh.bg.ac.rs

Duration of the programme (total no. of years)	STUDY PROGRAMME	Tuition fee per academic year (in EUR)	Institution (University / Faculty)
3	INDUSTRIAL ENGINEERING AND ENGINEERING MANAGEMENT	2500	University of Kragujevac Faculty of Engineering fink.rs/en/studies/doctoral-studies/phd-study-programmes/industrial-engineering-and-engineering-management studentska.sluzba@fink.rs
3	BIOENGINEERING	2500	University of Kragujevac Faculty of Engineering fink.rs/en/studies/doctoral-studies/phd-study-programmes/bioengineering studentska.sluzba@fink.rs
3	MECHANICAL ENGINEERING	2700	University of Belgrade Faculty of Mechanical Engineering mas.bg.ac.rs/eng/start se_nast@mas.bg.ac.rs mf@mas.bg.ac.rs
3	MECHANICAL ENGINEERING	2200	University of Niš Faculty of Mechanical Engineering masfak.ni.ac.rs/index.php/en milos.simonovic@masfak.ni.ac.rs info@masfak.ni.ac.rs
3	BIOCHEMICAL ENGINEERING AND BIOTECHNOLOGY	10000	University of Belgrade Faculty of Technology and Metallurgy tmf.bg.ac.rs/en studentska@tmf.bg.ac.rs
3	CHEMICAL ENGINEERING	10000	
3	CHEMISTRY	10000	
3	ENVIRONMENTAL ENGINEERING	10000	
3	MATERIALS ENGINEERING	10000	
3	METALLURGICAL ENGINEERING	10000	

Additional opportunities for studying in Serbia are also available at the Faculty of Occupational Safety, University of Niš. Please check their website for more information – znrfak.ni.ac.rs or contact them at international@znrfak.ni.ac.rs or evica.stojiljkovic@znrfak.ni.ac.rs.

Currently, there are more than 170 study programmes at all study levels taught entirely or partially in English. These are not the only programmes accredited in foreign languages. There are also programmes conducted in English and Serbian that might not be fully available in English this academic year. Those programmes are especially suitable for shorter student mobilities through Erasmus+ or other mobility programmes. Search for those programmes in the StudyInSerbia database for international students: studyinserbia.rs.

Centers of Serbian as a foreign language offer Serbian language courses in Belgrade, Novi Sad, Niš and Kragujevac.

Classes are usually organised as preparatory programmes that last one or two semesters. There are individual and group classes, summer schools and online courses.

START!

STEP 1

Find a suitable programme

To find a suitable programme, you can check the list of study programmes above or search for a programme in the Study in Serbia database studyinserbia.rs.

It is important to note that all study programmes and higher education institutions featured in this catalogue are accredited, which means they meet specific quality requirements for accreditation set up by the relevant authorities in the Republic of Serbia.

STEP 3

Check the application procedure and deadlines

Undergraduate admissions usually start in June. Intake to Master and PhD studies typically begins in September or October. Please note that application deadlines differ from programme to programme. Check the websites of higher education institutions to learn more about the application procedure and deadlines.

STEP 5

Prepare necessary documents and apply

Application documents usually include a completed application form, a copy of the passport/ID, transcripts of records and/or proof of acquired academic qualifications, confirmation of application fee payment etc. Check with the institution of your choice which documents you need to submit. Some documents may require a certified translation. At this stage you can usually submit the documents electronically or by post.

STEP 2

Check academic requirements

Bachelor	Four-year secondary school diploma, an entrance exam
Master	First cycle or bachelor degree that comprises 180 ECTS credits (3-year full-time studies) or 240 ECTS credits (4-year full-time studies), an entrance exam
PhD	Bachelor and master degrees (a minimum of 300 ECTS credits in total)

STEP 4

Get in touch with the higher education institution

If you are interested in a study programme featured in this publication, contact the higher education institution that offers the programme if you have any questions. Contact information can be found on the list of study programmes. If you are interested in any other programme, look for it in the Study in Serbia database or on the institution's website and find contact information. You can also email us at studyinserbia@tempus.ac.rs if you need any additional help.

STEP 6

Get your diploma(s) recognised

If you are interested in bachelor studies, your high school diploma should be recognised by the ENIC/NARIC Centre (azk.gov.rs/?page_id=75148) before you enrol in a study programme.

If you are continuing your studies in Serbia, contact the chosen institution (university or academy) to start the recognition process of your previous degrees. This process can be lengthy, so reach out to the relevant institutions well in advance.

SHARE YOUR
EXPERIENCES!

STEP 7

Take and pass an entrance exam

To be eligible to enrol in a university or college, you would most likely need to take and pass an entrance exam. Entrance exams are usually organised in June for undergraduate and in September/October for postgraduate studies. There is not one universal test all candidates need to take; entrance exams differ from programme to programme.

STEP 9

Apply for a visa

Most international students need a visa to come to Serbia for an entrance exam, so make sure to check if you need it at studyinserbia.rs/en/living-in-serbia/visa-and-permits. If you do, fill in the visa application form and submit it to the nearest Serbian embassy or consulate along with the rest of the required documents. Once you get accepted to a university/faculty, you will receive a conditional acceptance letter. Use that letter to apply for a type D (long-term) visa. If you are granted a type D visa, you need to apply for a residence permit after you arrive in Serbia.

STEP 11

Apply for a temporary residence permit

International students must apply for a residence permit upon their arrival in Serbia, which needs to be extended every year. To learn more, please visit the Study in Serbia website: studyinserbia.rs/en/living-in-serbia/visa-and-permits.

STEP 8

Formally enrol and pay the tuition fee

To complete your enrolment, you need to submit a confirmation of tuition fee payment, along with other documents, such as the certificate stating that your previously earned degree(s) is (are) acceptable (recognised) in Serbia. You may also be asked to submit additional documents.

Tuition fees should be paid in full, but some institutions offer the possibility of paying in instalments.

STEP 10

Find accommodation

International students can rent an entire flat for themselves or share it with other students. Look for accommodation in advance and contact the International Office at your university/faculty to check if they can assist you in finding a place to stay.

STEP 12

Study and enjoy student life

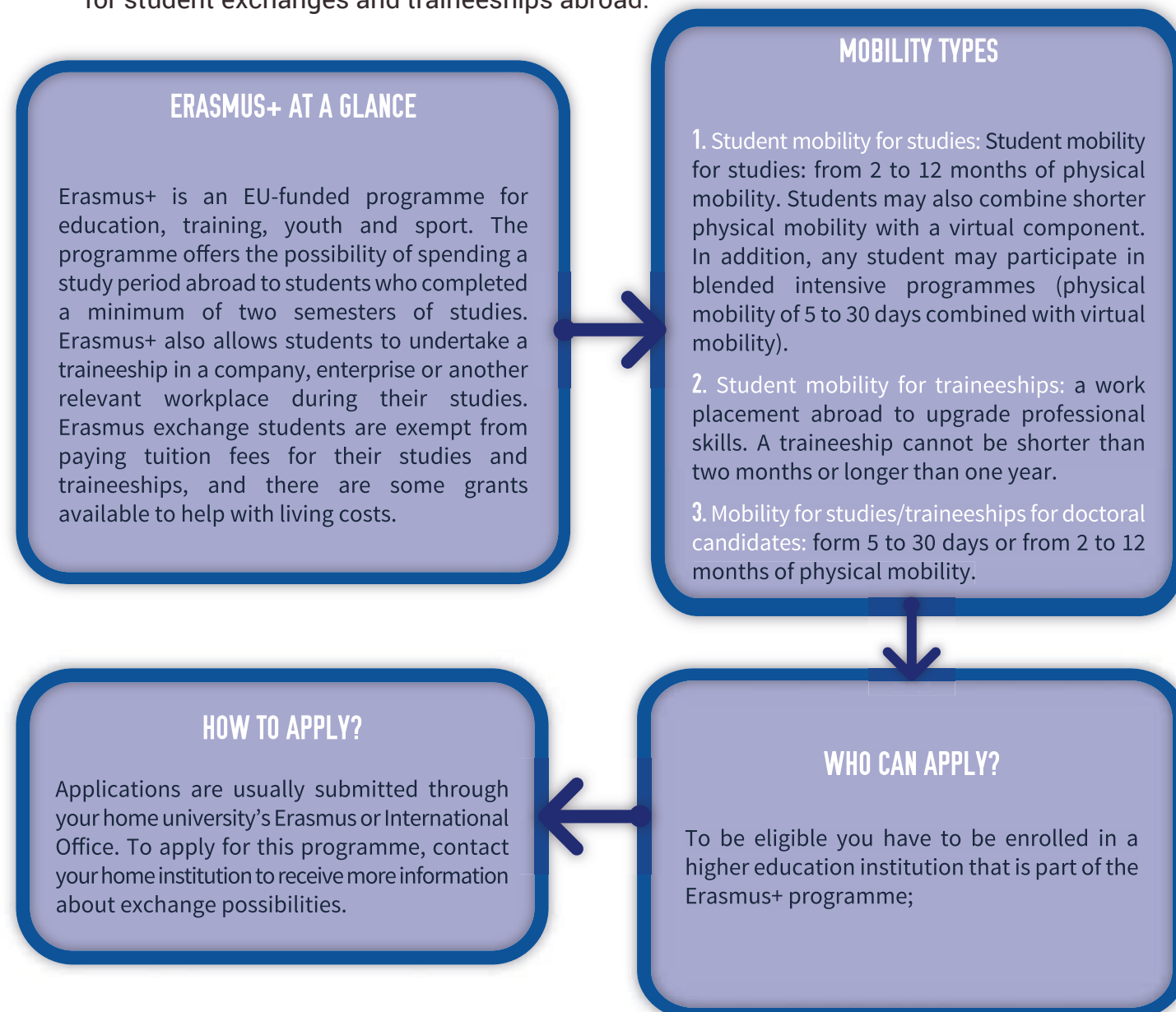
Go to classes regularly. In most cases, class attendance is mandatory and you are allowed to skip just a few sessions per semester.

Get a student card to receive discounts for different goods and services (intercity busses, restaurants, museums, cafes etc.). In addition, student cardholders can dine in student canteens at discounted prices.

Travel and discover Serbia and Europe to the fullest! Get engaged in student organisations to make new friends, learn about Serbian higher education and have fun!

If you need any help during your stay in Serbia, visit the Info Centre for international students in Belgrade, 39/I Terazije, or send us an e-mail to studyinserbia@tempus.ac.rs.

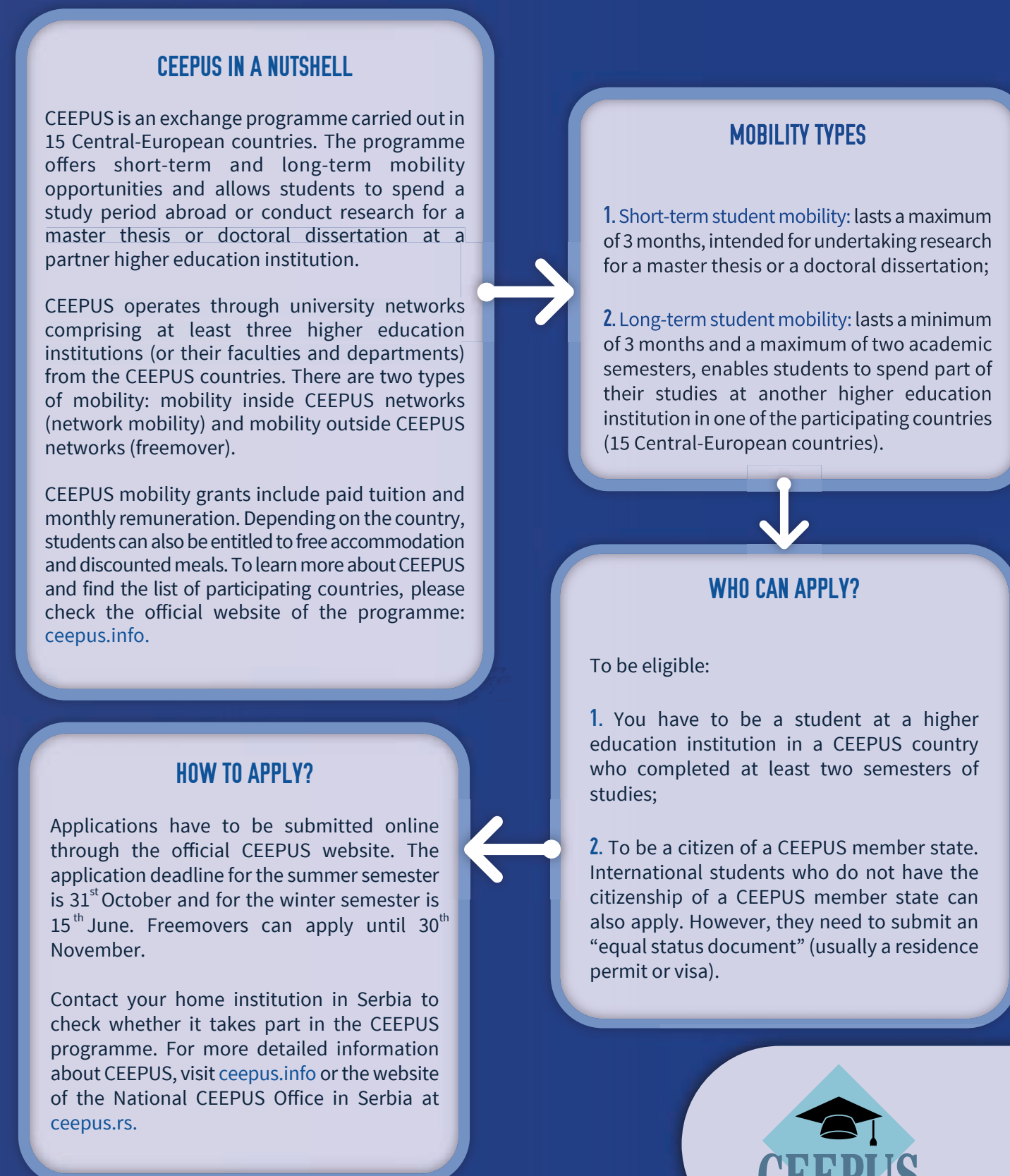
Did you know that there is a possibility of going on a student exchange to another European country while studying in Serbia? Through various student exchange programmes, such as Erasmus+ or CEEPUS, Serbian higher education institutions offer many opportunities for student exchanges and traineeships abroad.



The Foundation Tempus is responsible for the Erasmus+ programme in Serbia. For more information on the Erasmus+ mobility opportunities, please visit erasmusplus.rs/scholarships.



Erasmus+
Enriching lives, opening minds.



Experience...





The north of the country is covered in golden-green grain fields, which are intersected by many rivers. The central and southern parts are predominantly mountainous and rich in rivers and lakes. The western area of Serbia is covered in forests. It is known for its fruit production.



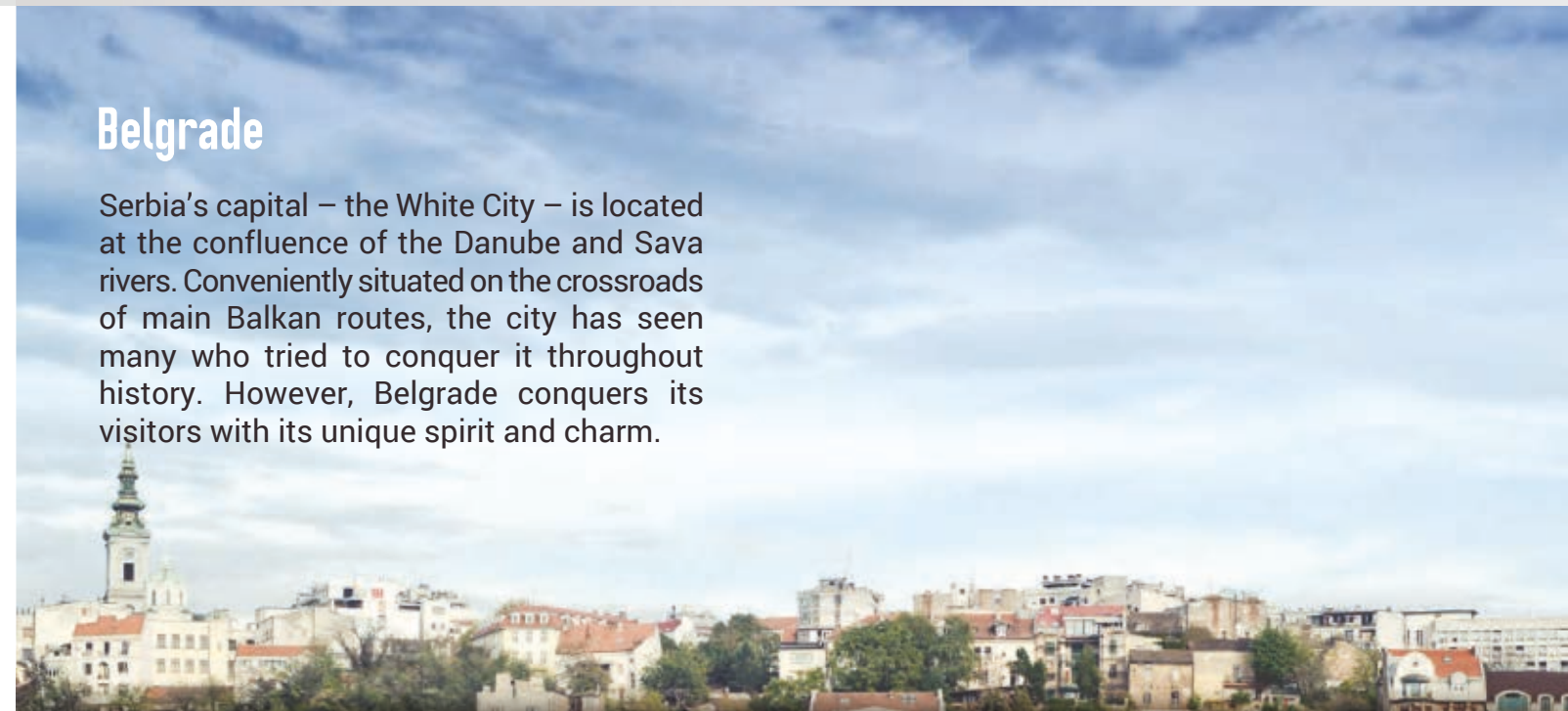
Serbia has attracted foreigners from the East and the West for many centuries. These historical encounters can be seen in architecture, culture, daily life, cuisine, and traditions. In recent years, a strong focus on innovation, creative industries, and the development of the IT sector put Serbia on the map of rising European economies.

Serbia strives to preserve its diversity and culture by fostering an atmosphere of community and hospitality.



Belgrade

Serbia's capital – the White City – is located at the confluence of the Danube and Sava rivers. Conveniently situated on the crossroads of main Balkan routes, the city has seen many who tried to conquer it throughout history. However, Belgrade conquers its visitors with its unique spirit and charm.



Novi Sad



The city of Novi Sad is the administrative centre of the northern province of Vojvodina and is located 90 kilometers northwest of the capital. It is internationally recognised as a host of one of the best music festivals in the world – Exit. It was also the 2019 European Youth Capital. Novi Sad holds the title of the European Capital of Culture for 2022.

Niš



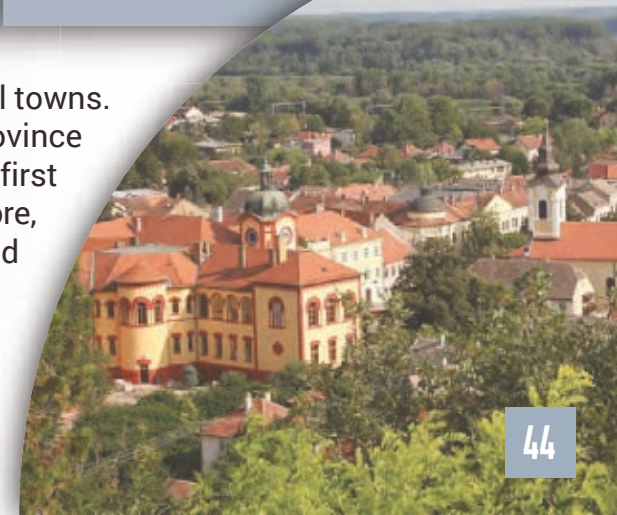
Globally known as the birthplace of one of the most eminent Roman emperors – Constantine the Great, the city of Niš is one of the oldest in the Balkans. Located in the southern part of Serbia, Niš is a large university centre and the administrative centre of the Nišava district.

Kragujevac



The very first capital of modern Serbia, the city of Kragujevac is home to one of the first democratic constitutions in the world that was adopted in the early 19th century. It is also a well-known university centre and the fourth largest city in the Republic of Serbia.

The beauty of Serbia can also be appreciated in its many small towns. Sremski Karlovci is one of them. The town is located in the province of Vojvodina and has a long scholarly tradition. Some of the first schools in the Serbian language were founded there. Furthermore, a university centre for international students will be established in Sremski Karlovci.



We are working on creating a **housing database** for **international students**. Please check the **Study in Serbia** website for updates.

studyinserbia.rs



Travelling in/to Serbia

You can reach Serbia by air, train, car or bus, depending on where you are located.

- Two airports: Nikola Tesla Belgrade (BEG) and Constantine the Great Niš (INI).
- Bus stations in every city/town: Buses are the most reliable means of getting around the country.
- Train stations in larger and smaller cities: Traveling by train is usually more budget-friendly; however, trains are not reliable as buses.
- Good highway networks: Serbia is on the Pan-European Corridor 10, the shortest route between Central/Western and Southern Europe. You can easily get around by car. Please make sure that your vehicle is insured and registered and that your driver's license is up to date.



Currency

- The official currency of Serbia is the Serbian dinar (abbreviated as RSD). You can get around 117.50 dinars for 1 euro (May 2022).
- Cash and debit/credit cards are widely accepted. Most ATMs are available 24/7. Banks also offer currency exchange services, but almost always at less favourable exchange rates than official exchange offices.



Health Emergency

- The Emergency Service is available around the clock and can be reached by dialing **194**. You are required to have health insurance during your stay in Serbia.



Sports and recreation in Serbia

Serbia is a country of athletes. The most popular sports in Serbia are football, basketball, water polo, tennis, volleyball etc. A variety of sporting events are organised throughout the year all around Serbia. People also frequently watch matches on big screens in cafes or restaurants, especially during international sporting competitions, such as the World Cup or the Olympics.

Here are some ways to unwind and have fun after a long day at the University

Join a sports or recreation club – You can become a member of a local sports club and practice your desired sport a few times a week. Monthly membership goes from 10 EUR to 50 EUR, depending on the sport and equipment needed. You can usually ask for one free training session to make sure you want to join the club.

Join a gym – Gyms, especially in larger cities, are numerous and easily accessible. Sign up for monthly membership and exercise at your own pace or receive help from a professional trainer.

Book a walking tour or go for a hike – Sign up for walking or hiking tours and explore stunning Serbian landscapes. If you want to discover Serbian cities, there are free walking tours that you can join.

Have a free evening? Go out!

There is always something going on, especially in the larger university cities.

Big shopping malls are open until 10 PM Monday through Sunday. Most restaurants, bars and cafes usually work until midnight on weekdays and until 1 or 2 AM on weekends. “Splavovi” – floating river clubs – and regular clubs are open until early morning.

Serbia is a safe country, so you can always enjoy a relaxing walk with friends after long study hours. There are grocery stores and bakeries that work around the clock, so you can also have a late-night snack while wandering around.

Festivals and concerts

Serbia is a country of music lovers and hosts many live concerts and festivals every year. Larger cities have glorious music venues ideal for major summer shows and festivals, such as EXIT. Smaller towns also host popular regional festivals and musicians.

Most popular festivals	What?	When	Where?
Exit	electro/pop-rock	July	Novi Sad
Nišville	jazz	August	Niš
Guča brass	bands/ethno	August	Guča village
Arsenal Fest	R’n’R/D’n’B	June	Kragujevac
Guitar Art Festival	classical guitar	March	Belgrade

Have a free weekend? Organise a trip!

Sleep in a real castle, take a selfie from one of the fortresses by the Danube river, walk the path of Roman emperors, experience history and religion by visiting beautiful monasteries from the middle ages or admire the power of nature in caves, by waterfalls or above canyons. You can also visit different fairs, food festivals or cultural events. Some travel agencies and organisations offer very affordable visits to natural and historic sites or cultural events around Serbia.



What are the most common phrases in Serbian?



Hello/Hi – Zdravo/Ćao	Good morning/afternoon/evening
Yes – Da	– Dobro jutro / Dobar dan / Dobro veče
No – Ne	
Thank you – Hvala	I do not speak Serbian, just English
Please – Molim	– Ne govorim srpski, samo engleski

I am not interested in degree studies. Are there any options for a short study period?



If you would like to come to Serbia for a shorter period, there are short-term exchanges, summer schools and academic conferences. You can find more about these events on the websites of institutions organising them or on the Study in Serbia website: studyinserbia.rs.

Is Serbia a safe country to live in?



Yes, it is. It is perfectly safe to live in Serbia. According to the Global Peace Index rankings for 2021, Serbia is perceived to be safer than, for example, France. People from all over the world are welcome to come.

Can I work in Serbia while studying?



Foreign students can work up to 20 hours per week during term time. Before working, they need to obtain a work permit. Work permits are issued by the National Employment Service. For more information, please consult the EURAXESS webpage – euraxess.rs.

Are there scholarships for foreign students?



There are student exchange programmes for short-term mobilities (Erasmus+ and CEEPUS). In addition, some scholarships may be available through bilateral agreements between Serbia and other countries. For more information on scholarship opportunities, please visit: studyinserbia.rs.

Are there many foreign students in Serbia?



Serbia has a long tradition of hosting international students, especially from Asia, Africa and Europe. Several thousand international students from over 110 countries study in Serbia.

The Ministry of Education, Science and Technological Development is dedicated to improving study opportunities for international students. These plans include an initiative to develop a modern centre for international students in Sremski Karlovci, a small town in northern Serbia with a long scholarly tradition.

“Studiraj u Srbiji” project is an initiative of the Ministry of Education, Science and Technological Development that aims to promote higher education in Serbia and improve services for international students. Visit mpn.gov.rs for information about the education system in Serbia. To learn more about the “Studiraj u Srbiji” internationalisation project contact studirajusrbiji@mpn.gov.rs.



REPUBLIC OF SERBIA
MINISTRY OF EDUCATION, SCIENCE AND
TECHNOLOGICAL DEVELOPMENT

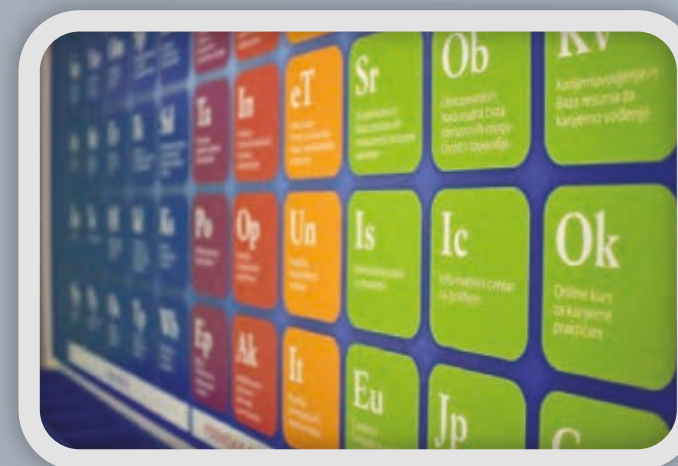
Study in Serbia is a database of learning opportunities in Serbia that can help you:

- find accredited study programmes at all levels of studies taught in English or other foreign languages;
- browse all accredited educational institutions in Serbia and get in contact with them;
- learn about scholarship opportunities;
- get general practical information for incoming students.

Serbia Creates is a national platform whose mission is to empower and connect talents, by promoting knowledge, excellence and creativity. The platform's goal is to globally promote Serbia's export potential in the field of creative industries, innovation, and knowledge-based economy. It provides support to local artists and creatives in gaining international recognition, promoting the highest contemporary values of creativity, innovation, authenticity, knowledge, and talent.

Driven by the belief that everything begins with a single idea and talented individual, Serbia Creates aims to build a strong national brand that relies on internationally acclaimed talents whose achievements, innovation, and creative ideas continue to inspire. National platform Serbia Creates is part of a wider initiative led by Prime Minister of Serbia Ana Brnabic to support growth of the innovative and creative ecosystem, in close cooperation with artists, scientist, innovators and the creative sector in general.

**SERBIA
CREATES
TALENT**



The Info Centre for international students is a one-stop shop for information on studying and living in Serbia. The Info Centre is located in downtown Belgrade (39 Terazije Street) and open to the public Monday through Friday from 10 AM to 6 PM.

The Info Centre provides general information to international students studying in Serbia and organises presentations, seminars, workshops and similar events. Furthermore, a library with resources, publications and information materials in Serbian and English is also available on-site.

If you have any questions, send an email to the Info Centre team at StudyInSerbia@tempus.ac.rs.



Impressum

Online publication: Study in Serbia 2022
Published by: Ministry of Education,
Science and Technological
Development of the Republic of Serbia
and Foundation Tempus

Design and layout: Foundation Tempus
Printed by: Proof
Circulation: 100 copies
Photos and illustrations:
Novi Sad - European Capital of Culture;
Foundation Tempus, Deposit Photos, Stock Unlimited